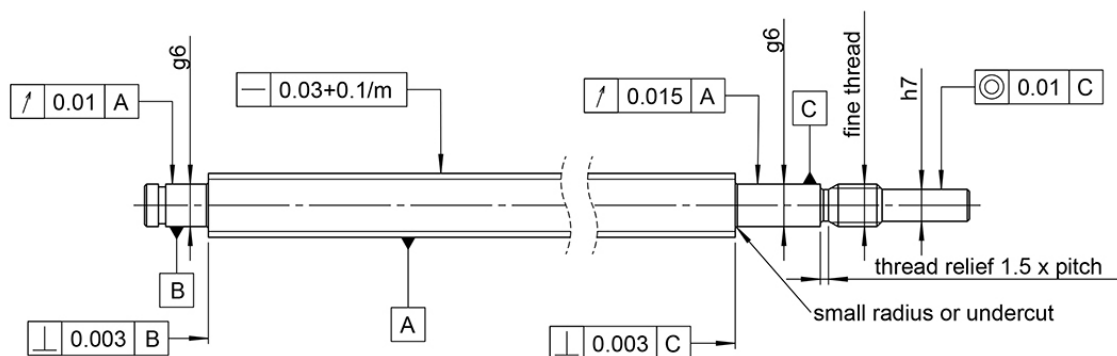




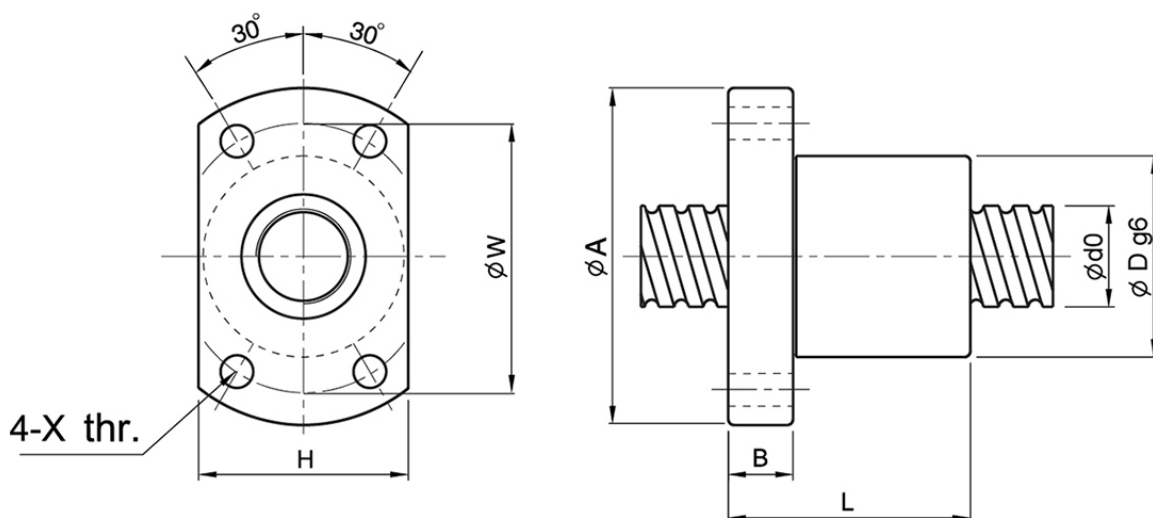
## General Data



Recommended dimensional and geometrical tolerances for typical machining of miniature ball screws.  
Undercuts, radii and thread reliefs to be checked for suitability for chosen bearing- and lock-nut solution.

Designation	Compatible with	Dynamic Load Ratings Ca (N)	Static Load Ratings C0a (N)	Ball diameter	Turns x circuits
SFKR0601	—	1110	2240	0.8	1 x 3
SFKR0801	FKN06	1610	4030	0.8	1 x 4
SFKR1002	FKN06	2430	5690	1.2	1 x 3
SFKR1202	BKN08 / FKN08 / BFN08	3340	9060	1.2	1 x 4
SFKR1402	BKN10 / FKN10 / BFN10 / FFN10	3540	10530	1.2	1 x 4

## Dimensions



Designation	A	B	D	H	L	W	X	d0 x Lead
SFKR0601	24	3.5	12	16	15	18	3.4	6 x 1
SFKR0801	27	4	14	18	16	21	3.4	8 x 1
SFKR1002	35	5	18	22	28	27	4.5	10 x 2
SFKR1202	37	5	20	24	28	29	4.5	12 x 2
SFKR1402	40	6	21	26	23	31	5.5	14 x 2