

## RSCR

Single Nut, Cylindrical with Thread, Internal Recirculation.

Standard nuts are with oil-seals.

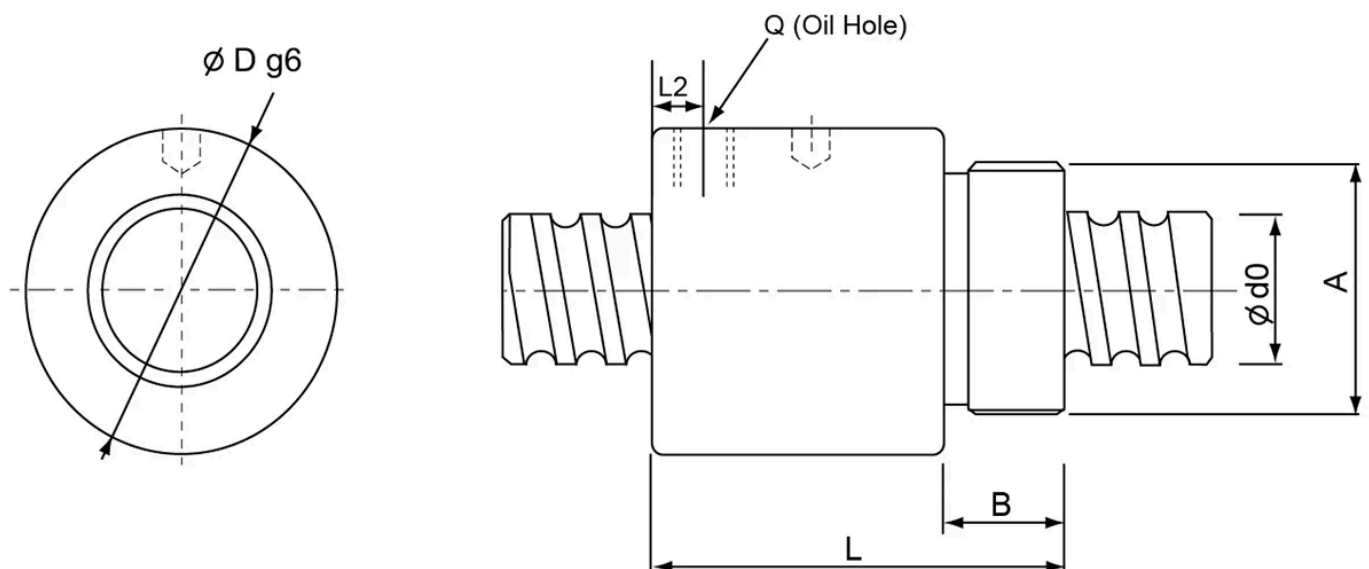
All dimensions in mm.



## General Data

Designation	Compatible with	Dynamic Load Ratings Ca (N)	Static Load Ratings C0a (N)	Ball diameter	Turns x circuits
RSCR1605	BKN12 / FKN12 / BFN12 / FFN12	13185	14960	3.175	1 x 4
RSCR2005	BKN15 / FKN15 / BFN15 / FFN15	14833	19571	3.175	1 x 4
RSCR2505	BKN20 / FKN20 / BFN20 / FFN20	16716	25320	3.175	1 x 4
RSCR2510	BKN17 / FKN17 / BFN17 / FFN17	28263	36248	4.762	1 x 4
RSCR3205	BKN25 / FKN25 / WBK25DF / BFN25 / FFN25	18874	33383	3.175	1 x 4
RSCR3210	BKN25 / FKN25 / WBK25DF / BFN25 / FFN25	47422	76861	6.35	1 x 4
RSCR4005	BKN30 / FKN30 / WBK30DF / WBK30DFF / BFN30 / FFN30	21003	35081	3.175	1 x 4
RSCR4010	BKN30 / FKN30 / WBK30DF / WBK30DFF / BFN30 / FFN30	52964	98826	6.35	1 x 4
RSCR5010	BKN40 / WBK40DF / WBK40DFF / BFN40	58203	120791	6.35	1 x 4

## Dimensions



Designation	A	B	D	L	Q	L2	d0 x Lead
RSCR1605	M30 x 1.5	16	32	56	M6	6.5	16 x 5
RSCR2005	M35 x 1.5	16.5	38	59.5	M6	7	20 x 5
RSCR2505	M40 x 1.5	17	42	60	M6	7	25 x 5
RSCR2510	M40 x 1.5	17	42	90	M6	10	25 x 10
RSCR3205	M48 x 1.5	19	52	60	M6	7	32 x 5
RSCR3210	M48 x 1.5	19	52	93	M6	12	32 x 10
RSCR4005	M56 x 1.5	19	58	59	M8	6	40 x 5
RSCR4010	M60 x 2	27	65	102	M8	12	40 x 10
RSCR5010	M72 x 2	29	78	104	M8	12	50 x 10