

XTR---.0300

- Combined – adjustable with insert washer
- Extra sustainable
- Extra exact
- Extra strong
- Extra long-lasting
- Adjustment of dimension A by using a shim

Use profile XUP---.0700

Fixing square element BQ---.1000

Rectangular fixing element BR---.1100

Note! System Load Capacity refers to capacity of both rail and bearing. Dynamic Load Capacity refers to bearing.

Dimensions in mm.

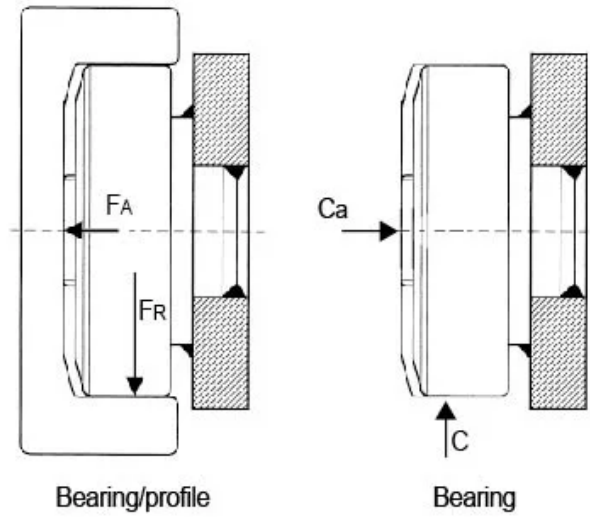
Roller Type: Heavy

Sizes Available: 60; 70; 80; 90; 110; 120; 150



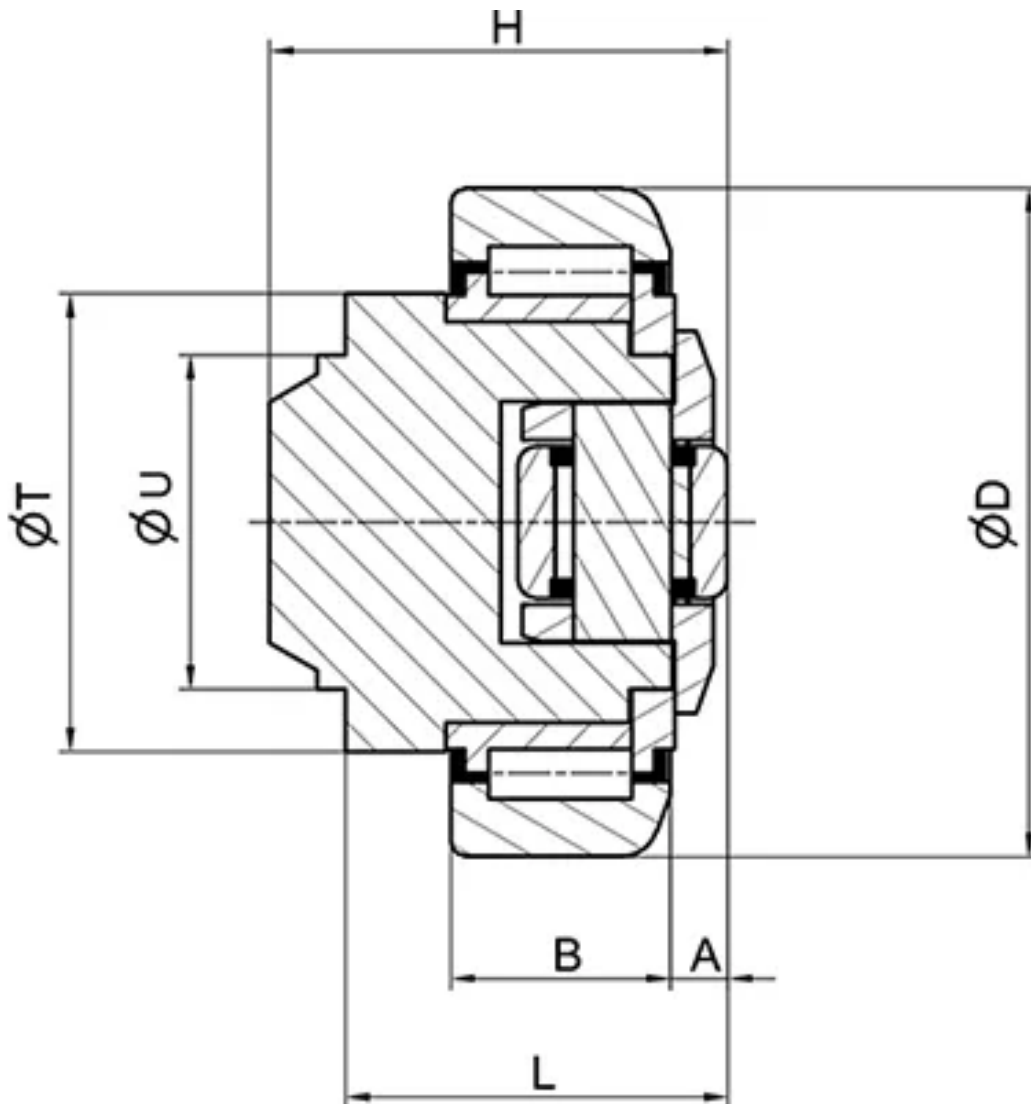
General Data

FA = System Load Capacity Axial
 FR = System Load Capacity Radial
 Ca = Dynamic Load Capacity Axial
 C = Dynamic Load Capacity Radial



Designation	System Load Capacity Radial (N)	System Load Capacity Axial (N)	Dynamic Load Capacity Axial (N)	Dynamic Load Capacity Radial (N)	Profile
XTR060.0300	15390	3800	8000	31000	XUP---.0700
XTR070.0300	16430	4100	13000	45500	XUP---.0700
XTR080.0300	18210	6500	14000	48000	XUP---.0700
XTR090.0300	31680	6600	15000	68000	XUP---.0700
XTR110.0300	34850	11500	31000	81000	XUP---.0700
XTR120.0300	47430	12700	31000	110000	XUP---.0700
XTR150.0300	82190	22600	68000	151000	XUP---.0700

Dimensions



Designation	A	B	D	H	L	T	U
XTR060.0300	5.5	20	65.5	43	33	42	30
XTR070.0300	6.5	23	73.8	48	40	48	35
XTR080.0300	7	23	81.7	50.5	39.5	54	40
XTR090.0300	7	30	92.4	61	48	59	45
XTR110.0300	8	31	111.4	69	55	71	60
XTR120.0300	8	37	126.8	75.8	59.5	80	60
XTR150.0300	15	45	153.1	89	69	103	60