

## STR---.4200

Plate, yoke and outside of roller made entirely in stainless steel 1.4301.

Stainless, sealed and lubricated for life rolling bearings inside the rollers.

Use profile UP---.0780

Dimensions in mm.

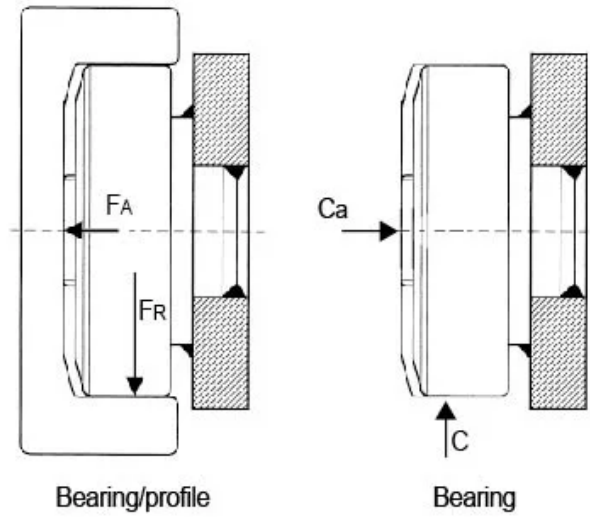
**Roller Type:** Stainless

**Sizes Available:** 50; 70; 80



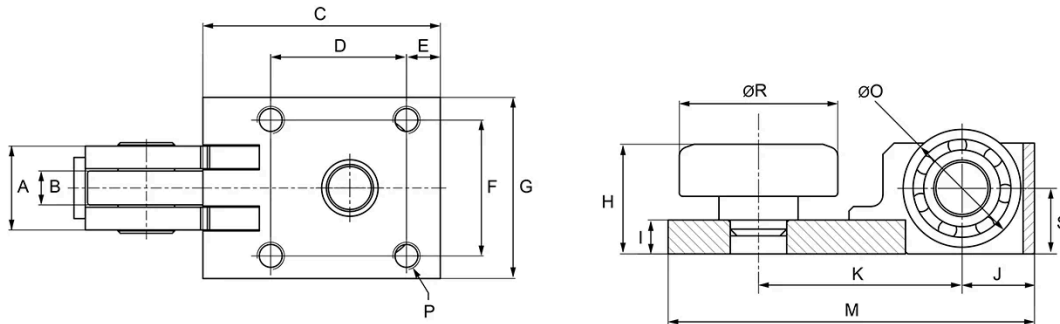
## General Data

$F_A$  = System Load Capacity Axial  
 $F_R$  = System Load Capacity Radial  
 $C_a$  = Dynamic Load Capacity Axial  
 $C$  = Dynamic Load Capacity Radial



| Designation | System Load Capacity Radial (N) | System Load Capacity Axial (N) | Profile    |
|-------------|---------------------------------|--------------------------------|------------|
| STR050.4200 | 3500                            | 2000                           | UP---.0780 |
| STR070.4200 | 6000                            | 3000                           | UP---.0780 |
| STR080.4200 | 7200                            | 3000                           | UP---.0780 |

## Dimensions



| Designation        | A  | B  | C   | D  | E  | F  | G  | H    | I  |
|--------------------|----|----|-----|----|----|----|----|------|----|
| <b>STR050.4200</b> | 33 | 12 | 72  | 40 | 10 | 30 | 50 | 37.9 | 15 |
| <b>STR070.4200</b> | 37 | 15 | 105 | 60 | 15 | 60 | 80 | 48.5 | 15 |
| <b>STR080.4200</b> | 37 | 15 | 105 | 60 | 15 | 60 | 80 | 48.5 | 15 |

| Designation        | J  | K  | M   | N  | O    | P       | R      | S  |
|--------------------|----|----|-----|----|------|---------|--------|----|
| <b>STR050.4200</b> | 21 | 62 | 113 | 43 | Ø 40 | 4 x M8  | Ø 52.5 | 23 |
| <b>STR070.4200</b> | 32 | 90 | 162 | 55 | Ø 52 | 4 x M12 | Ø 70.1 | 29 |
| <b>STR080.4200</b> | 32 | 90 | 162 | 55 | Ø 52 | 4 x M12 | Ø 77.7 | 29 |