

## BR---.1100

- The fixing element is welded with the respective combined roller
- Special dimensions on request.

\* For L measurement, see respective roller.

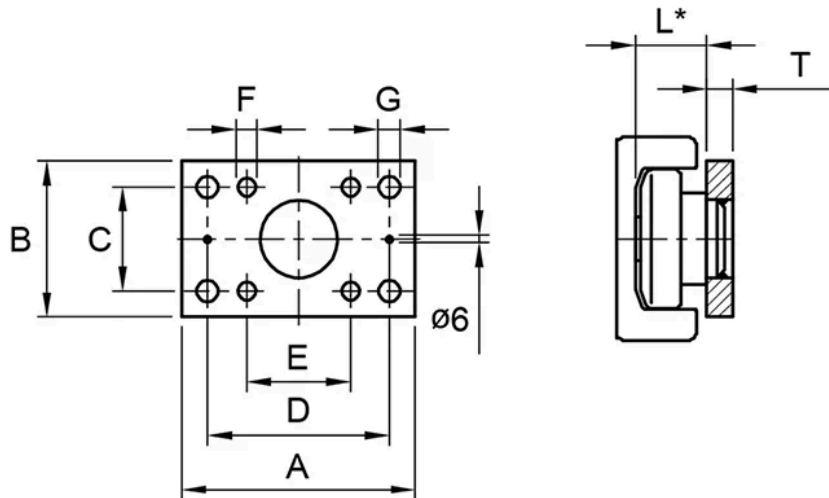
Order example: Roller + fixing element TR070.0200/BR 1100

Roller, combined, fixed, Ø 70,1 mm - welded with mounting plate 120 x 80 x 15 mm

Dimensions in mm.



## Dimensions



Designation	Remark	G	A	B	D	F	C	T	E
<b>50-BR1100</b>	Roller: TR050.---, Plate: BR1100, Distance sheet: BR050.1505, BR050.1510	10.5	100	60	80	M10	40	10	40
<b>60-BR1100</b>	Roller: TR060.--- / XTR060.---, Plate: BR1100, Distance sheet: BR060.1505, BR060.1510	10.5	100	60	80	M10	40	10	40
<b>70-BR1100</b>	Roller: TR070.--- / XTR070.---, Plate: BR1100, Distance sheet: BR070.1505, BR070.1510	13	120	80	90	M12	50	15	50
<b>80-BR1100</b>	Roller: TR080.--- / XTR080.---, Plate: BR1100, Distance sheet: BR080.1505, BR080.1510	13	120	80	90	M12	50	15	50
<b>90--BR1100</b>	Roller: TR090.--- / XTR090.---, Plate: BR1100, Distance sheet: BR090.1505, BR090.1510	17	160	100	120	M16	60	20	60

## Dimensions

Designation	Remark	G	A	B	D	F	C	T	E
<b>110-BR1100</b>	Roller: TR110.--- / XTR110.---, Plate: BR1100, Distance sheet: BR110.1505, BR110.1510	17	180	120	140	M16	80	20	80
<b>120-BR1100</b>	Roller: TR120.--- / XTR120.---, Plate: BR1100, Distance sheet: BR120.1505, BR120.1510	17	180	120	140	M16	80	20	80
<b>150-BR1100</b>	Roller: TR150.--- / XTR150.---, Plate: BR1100, Distance sheet: BR150.1505, BR150.1510	17	200	150	160	M16	100	20	100