

## Ball Head 15 with Female Thread

Directly links knuckle feet by means of a standard screw.

For hinged steel/stainless steel knuckle feet

Material: Galvanised/stainless steel: 1.4305

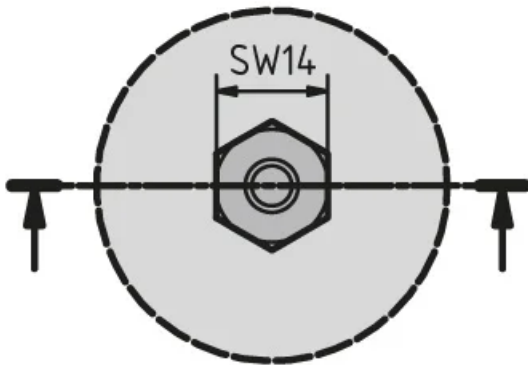
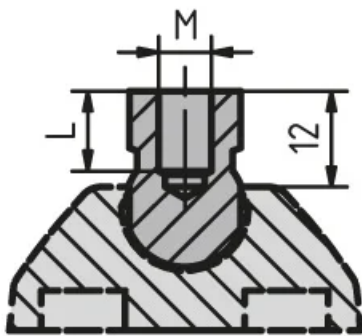
**System:** 30 - Slot 6; 20 - Slot 5

**Type:** Feet





## General Data



Designation	Description	Material	MxL
PZ5154	Ball 15	Galvanised steel	6x10
PZ5155	Ball 15	Stainless steel	6x10
PZ5156	Ball 15	Galvanised steel	8x10
PZ5157	Ball 15	Stainless steel	8x10