

## Plastic Combination Hinge, No Unhinging

For surface elements and aluminium profiles.

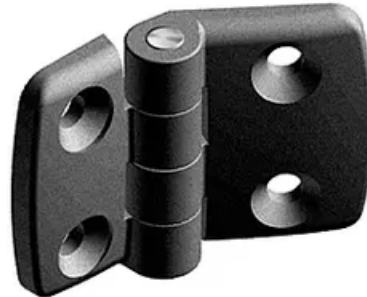
Material: Wing = Plastic (PA), fibreglass-reinforced.

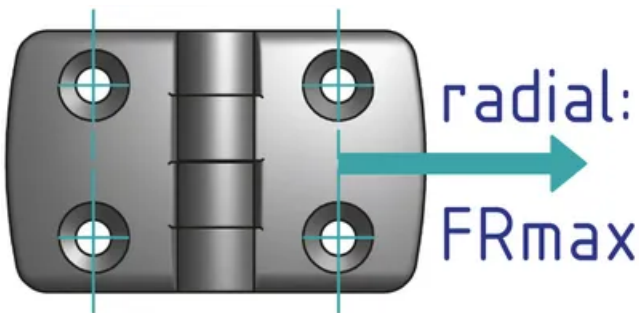
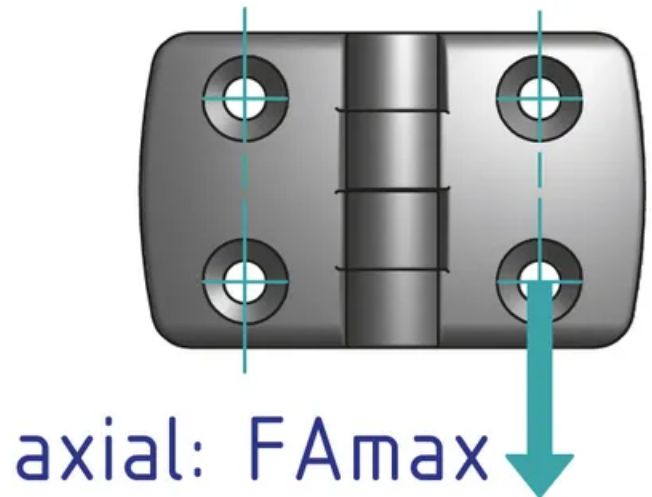
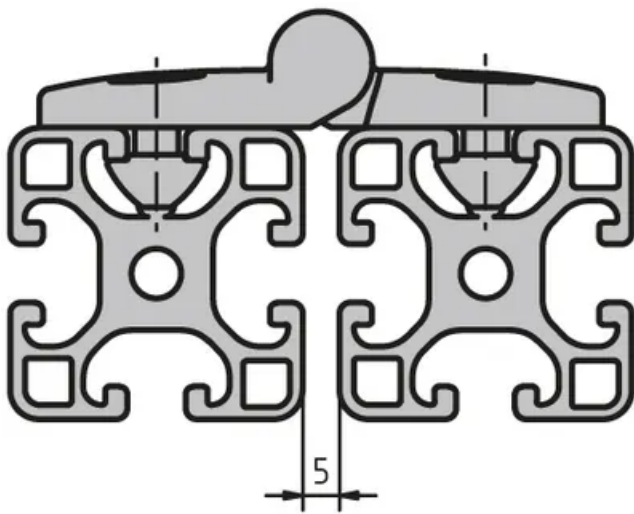
Pin = Stainless steel

On-site mount: M6 × 12 or M6 × 16 countersunk screw and slot nuts at the front

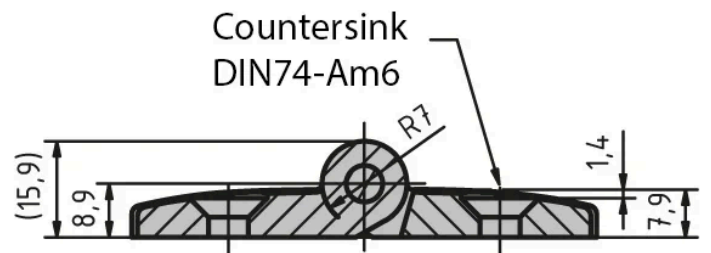
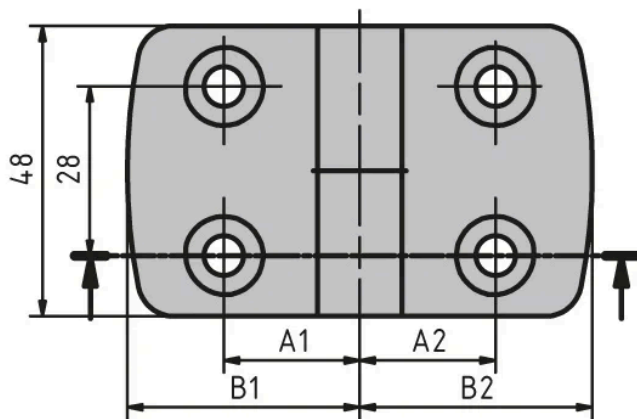
**System:** 30 - Slot 6

**Type:** Hinges





**General Data**



Designation	Description	System	$F_{max}$ (N)	$F_{Rmax}$ (N)	A1/A2
PZ5024	Plastic combination hinge 30 × 30	30 - Slot 6	450	700	17.5/17.5
PZ5025	Plastic combination hinge 30 × 40	30 - Slot 6	450	750	17.5/22.5

Designation	B1/B2
PZ5024	29.5
PZ5025	29.5/38.5