

Central Fastener 6 Anti-rotate

To connect two aluminum profiles at right angles. A hole must be drilled through one of the profiles to provide access to the tightening screw.

Angle: 0° / 90°

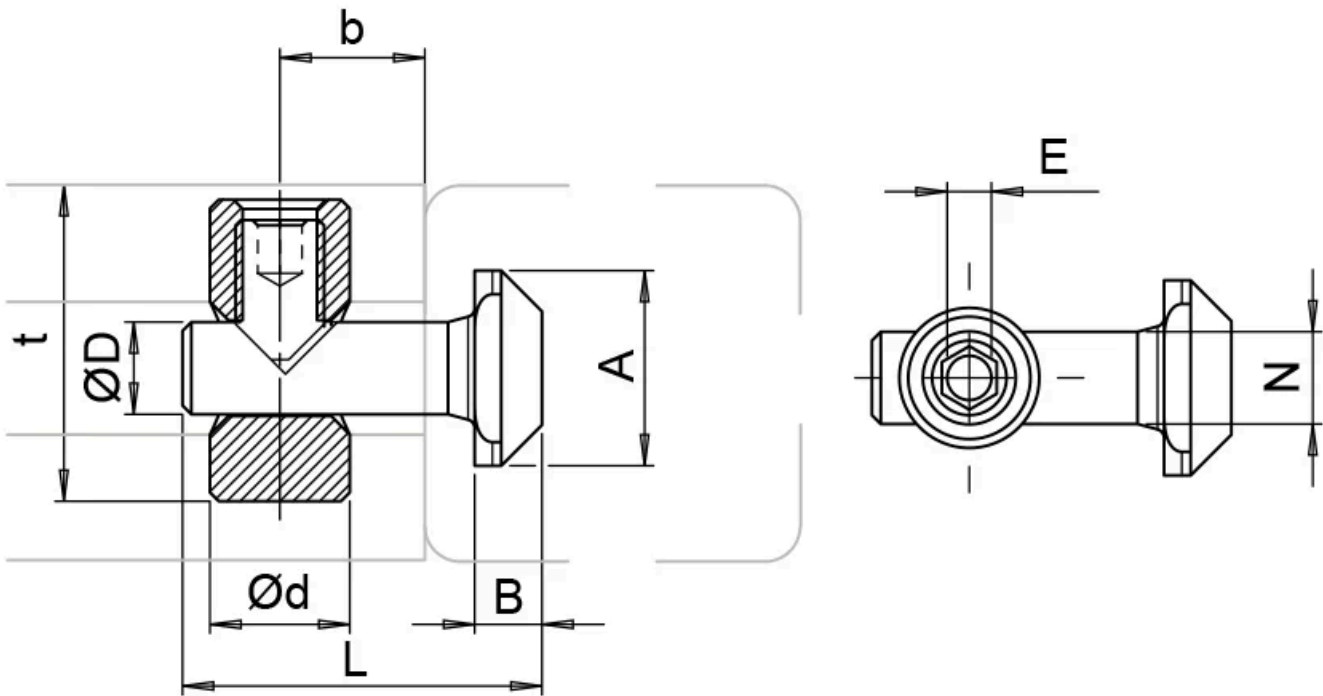
Material: Stainless steel

System: 30 - Slot 6

Type: Fasteners



General Data



Designation	Description	System	A	B	D
PZ3912	Central Fastener 6 Anti-rotate	30 - Slot 6	11.0	3.8	5.2

Designation	L	b	Weight (g)	E
PZ3912	20.3	10	9.5	2.5