

Omega Clamp

Application:

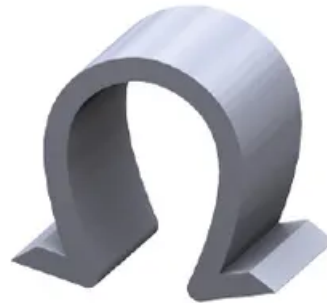
The clamp is clipped into the t-slot. Using the clamp, pneumatic tubes, cable ducts or control lines can be attached to profiles of series 30 and 40.

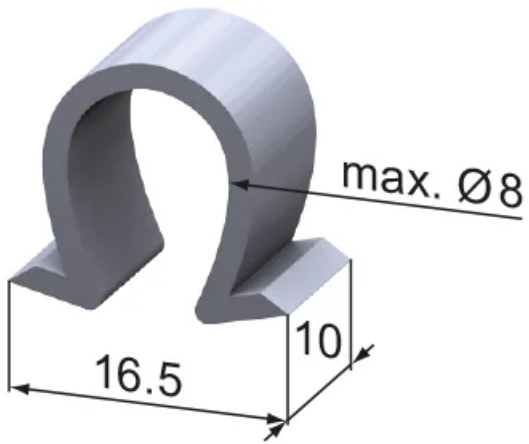
Omega are used to clamp conduits and compressed air lines etc. to any type of profile section that uses the M8 t-slot. If they are no longer needed, the clamps can be removed easily.

Material: PP, grey

System: 40 - Slot 8

Type: System Gliders and Rollers





General Data

Designation	Description	System	Weight (g)
SZ1580N	Omega Clamp, Type A	40 - Slot 8	0.55