

Standard MR-M Rail

Tapped from above.

Dimensions in mm.

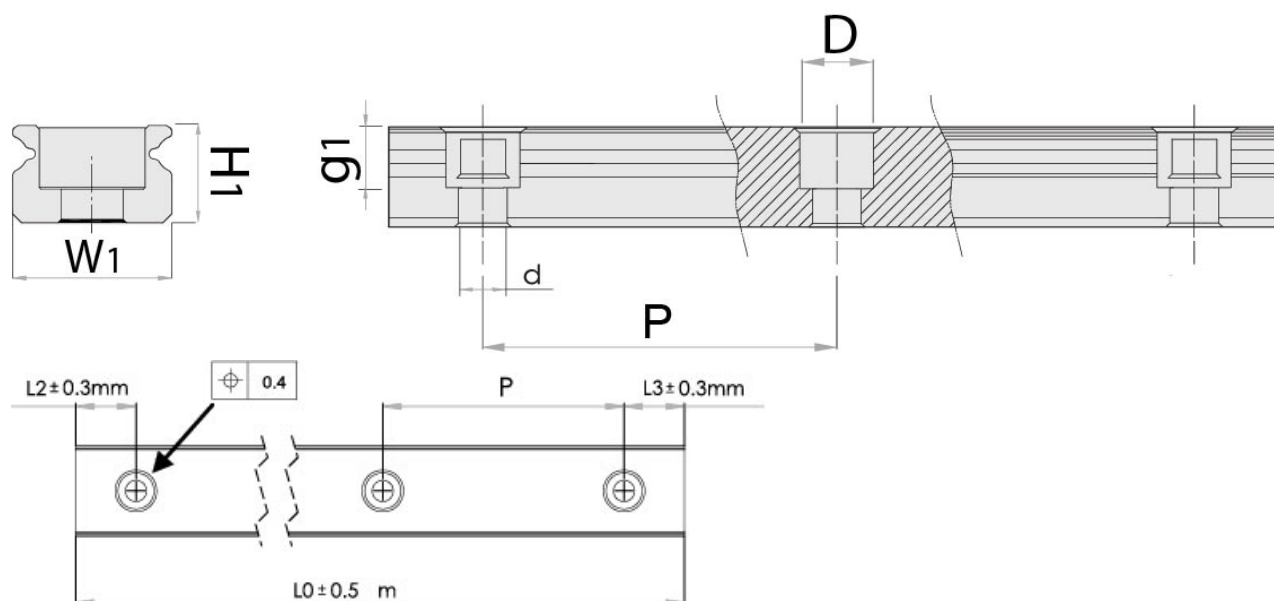
Please note that blocks and rails are not sold separately for sizes 2 and 3. Due to the small dimensions, blocks and sliders must be assembled and matched carefully to ensure correct quality and tolerances.



General Data

| Designation | Weight Rail (g/m) |
|-------------|-------------------|
| MR5M | 116 |
| MR7M | 215 |
| MR9M | 301 |
| MR12M | 602 |
| MR15M | 930 |

Dimensions



| Designation | H1 | W1 | D x d x g1 | Hole Pitch (P) |
|--------------|-----|----|-----------------|----------------|
| MR5M | 3.5 | 5 | 3.5 x 2.4 x 1 | 15 |
| MR7M | 4.7 | 7 | 4.2 x 2.4 x 2.3 | 15 |
| MR9M | 5.5 | 9 | 6 x 3.5 x 3.5 | 20 |
| MR12M | 7.5 | 12 | 6 x 3.5 x 4.5 | 25 |
| MR15M | 9.5 | 15 | 6 x 3.5 x 4.5 | 40 |