

SBI FL

Standard length block with flange, normal height. Side nipple, dustproof end seal and self-lubricant container end seal as option.

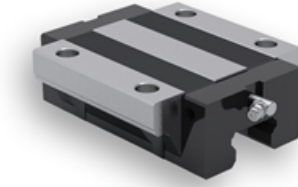
* S: Bolt size for bottom mounting type of block

All blocks and rails are also available in Raydent treated material:

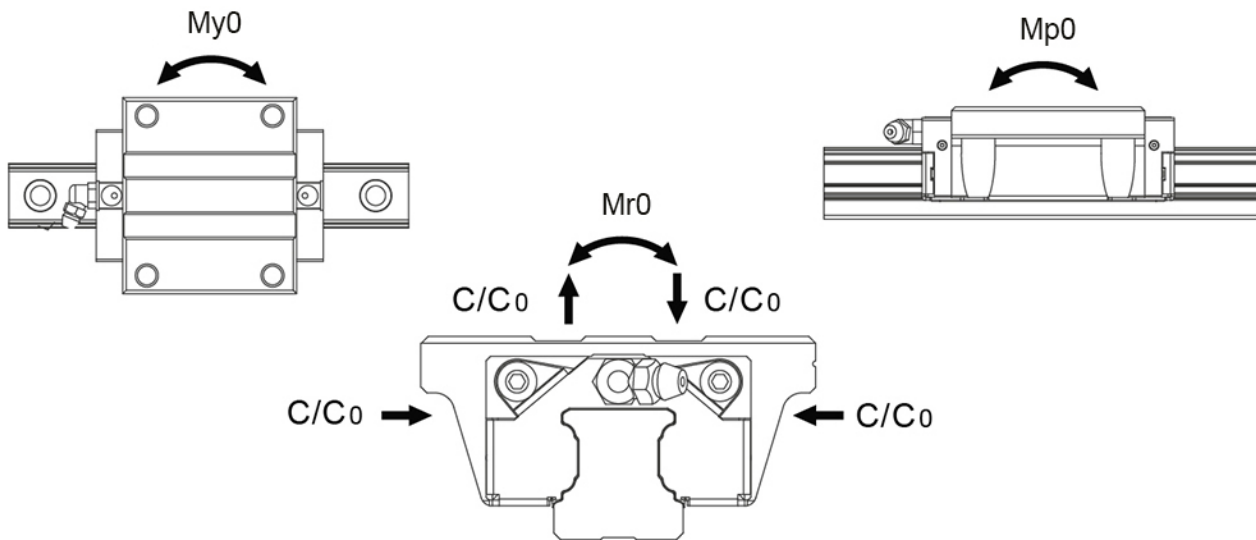
- Corrosion resistant
 - Patented black surface
 - Delivered with steel balls of standard bearing steel.
- Stainless steel balls are available on special request and for a few sizes only. Contact Rollco for more information.

Dimensions in mm.

Lead times in the table below are only indications. Choice of preload and other options will affect lead time. Please contact us for exact delivery time for your request.



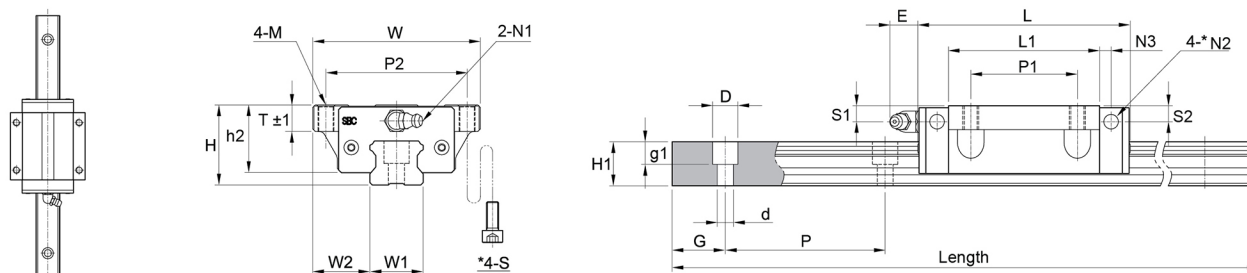
General Data



Designation	Dynamic Load Capacity C (N)	Static Load Capacity C0 (N)	Static Moment Mr0 (Nm)	Static Moment Mp0 (Nm)	Static Moment My0 (Nm)
SBI15FL	14100	24100	160	170	170
SBI20FL	22200	38200	360	330	330
SBI25FL	31500	52100	560	560	560
SBI30FL	42800	65400	850	770	770
SBI35FL	59500	89100	1420	1280	1280
SBI45FL	79200	116300	2480	1900	1900
SBI55FL	127300	181800	4810	2970	2970
SBI65FL	188300	261700	8240	5570	5570

Designation	Dynamic Moment Mr (Nm)	Dynamic Moment Mp (Nm)	Dynamic Moment My (Nm)	Weight Block (g)	Weight Rail (g/m)
SBI15FL	94	99	99	190	1300
SBI20FL	209	192	192	410	2200
SBI25FL	339	339	339	690	3000
SBI30FL	556	504	504	1040	4250
SBI35FL	948	855	855	1560	6020
SBI45FL	1689	1294	1294	2800	9770
SBI55FL	3368	2080	2080	4420	13720
SBI65FL	5929	4008	4008	9100	23170

Dimensions



Designation	L	H	W	W1	W2	L1	H1	h2	S1
SBI15FL	63.8	24	47	15	16	45.2	13	21	4.5
SBI20FL	78.8	30	63	20	21.5	56.8	16.5	25.4	6
SBI25FL	92	36	70	23	23.5	70	20	30.5	6
SBI30FL	107.6	42	90	28	31	79.6	23	35	8.5
SBI35FL	124.6	48	100	34	33	94.6	26	40.5	8
SBI45FL	142	60	120	45	37.5	108	32	51	10.5
SBI55FL	172.4	70	140	53	43.5	131	38	58	12
SBI65FL	219.8	90	170	63	53.5	170.4	53	71	14

Designation	S2	D x d x g1	Hole Pitch (P)	N1	N2	N3	P1	P2	E	G
SBI15FL	3.8	7.5 x 4.5 x 5.5	60	M4x0.7	Ø 3.5	3.8	30	38	5.5	20
SBI20FL	5.8	9.5 x 6 x 8.5	60	M6x0.75	Ø 3.5	5	40	53	12	20
SBI25FL	5	11 x 7 x 9	60	M6x0.75	Ø 3.5	5	45	57	12	20
SBI30FL	7.8	14 x 9 x 12	80	M6x0.75	Ø 5.7	5	52	72	12	20
SBI35FL	8	14 x 9 x 12	80	M6x0.75	Ø 5.7	6	62	82	12	20
SBI45FL	9.3	20 x 14 x 17	105	PT 1/8	Ø 5.7	6.5	80	100	13.5	22.5
SBI55FL	12	23 x 16 x 20	120	PT1/8	Ø 8.7	8	95	116	13	30
SBI65FL	14	26 x 18 x 22	150	PT1/8	Ø 8.7	10	110	142	13	35

Designation	M	P	S	T	Length
SBI15FL	M5	60	M4	9	3000
SBI20FL	M6	60	M5	12	4000
SBI25FL	M8	60	M6	14	4000
SBI30FL	M10	80	M8	15.5	4000
SBI35FL	M10	80	M8	15	4000
SBI45FL	M12	105	M10	18	4000
SBI55FL	M14	120	M12	22	4000
SBI65FL	M16	150	M14	26	4000