

Table of contents

- WRC MN
- WRC FN
- WRC Rail
- WRU Rail
- Metal-Plastic Cap

WRC MN

Standard block, available both with and without ball chain. Versions with ball chain are indicated with ...C in the designation in the table below.

For high load applications or any application where severe chock-loads may occur, the standard version offers better safety margins by its higher static limit (C0). For light to medium loads where a very long lifetime is required, the ball-cage will show superior life span and reliability.

Please note that ball chain versions must never be used for linear speeds exceeding 3 m/s!

Size 21/15 delivered with straight standard nipple.
Size 27/20 delivered with angled standard nipple.

Lubrications injections ports on the block:

N1: Front of the block. All blocks are delivered with front mounted standard grease nipple.

N2: Side of the block. The side lubrication injection port is sealed on delivery to prevent leakage of lubrication.

N3: Top of the block with an O-ring seal. The top lubrication injection port is sealed on delivery to prevent leakage of lubrication.

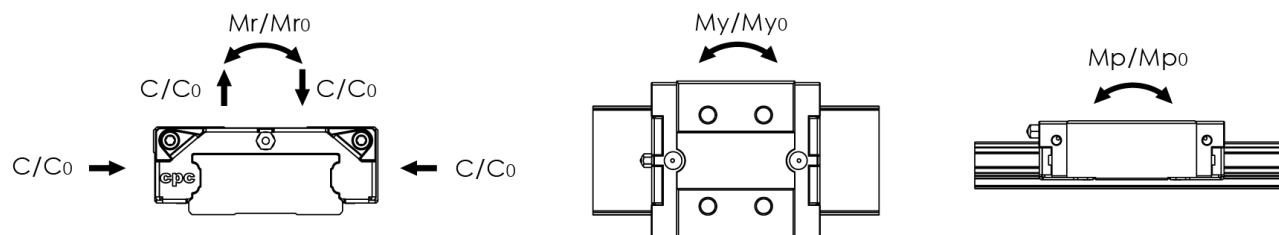
Dimensions in mm.

Lead times in the table below are only indications. Choice of preload, accuracy class and other options will affect lead time. Please contact us for exact delivery time for your request.

For more information about calculation of life, load rating and static moment see Technical information.



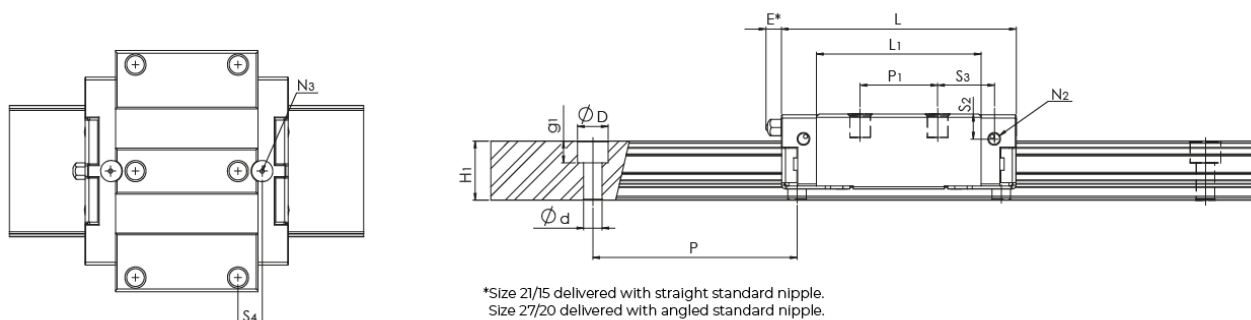
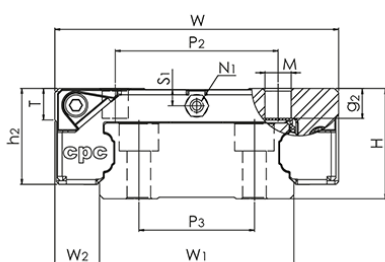
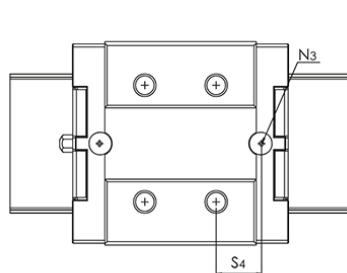
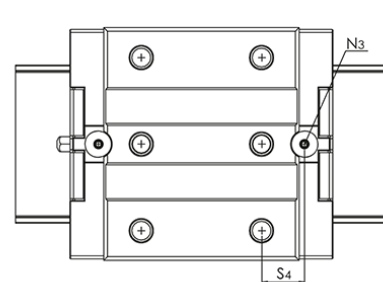
General Data



| Designation | Dynamic Load Capacity C (N) | Static Load Capacity C0 (N) | Static Moment Mr0 (Nm) | Static Moment Mp0 (Nm) | Static Moment My0 (Nm) |
|-----------------------|-----------------------------|-----------------------------|------------------------|------------------------|------------------------|
| WRC21/15MN | 9900 | 17500 | 315 | 105 | 105 |
| WRC27/20MN | 17100 | 30000 | 634 | 230 | 230 |
| WRC21/15MN...C | 11800 | 16200 | 295 | 95 | 95 |
| WRC27/20MN...C | 22300 | 25700 | 535 | 200 | 200 |

| Designation | Dynamic Moment Mr (Nm) | Dynamic Moment Mp (Nm) | Dynamic Moment My (Nm) | Weight Block (g) |
|-----------------------|------------------------|------------------------|------------------------|------------------|
| WRC21/15MN | 178 | 59 | 59 | 160 |
| WRC27/20MN | 361 | 131 | 131 | 320 |
| WRC21/15MN...C | 215 | 69 | 69 | 160 |
| WRC27/20MN...C | 464 | 174 | 174 | 320 |

Dimensions


WRC MN

WRC21/15MN

WRC27/20MN


| Designation | L | W | H | L1 | H1 | h2 | W1 | W2 | S1 |
|-----------------------|------|----|----|------|------|------|----|-----|-----|
| WRC21/15MN | 57.5 | 54 | 21 | 40.3 | 14.4 | 18.3 | 37 | 8.5 | 3.3 |
| WRC27/20MN | 70 | 62 | 27 | 52 | 18.5 | 23.5 | 42 | 10 | 4.5 |
| WRC21/15MN...C | 57.5 | 54 | 21 | 40.3 | 14.4 | 18.3 | 37 | 8.5 | 3.3 |
| WRC27/20MN...C | 70 | 62 | 27 | 52 | 18.5 | 23.5 | 42 | 10 | 4.5 |

| Designation | S2 | S3 | S4 | S5 | E | T | N1 | N2 | N3 | M x g2 |
|-----------------------|-----|------|------|----|-----|----|----|------|----|--------|
| WRC21/15MN | 6.1 | 13.9 | 11.9 | - | 5.3 | 6 | M3 | M3x3 | P3 | M5x5 |
| WRC27/20MN | 8 | 13.2 | 11.5 | 11 | 5.3 | 10 | M3 | M3x4 | P4 | M6x6 |
| WRC21/15MN...C | 6.1 | 13.9 | 11.9 | - | 5.3 | 6 | M3 | M3x3 | P3 | M5x5 |
| WRC27/20MN...C | 8 | 13.2 | 11.5 | 11 | 5.3 | 10 | M3 | M3x4 | P4 | M6x6 |

| Designation | D x d x g1 | Hole Pitch (P) | P1 | P2 | P4 |
|-----------------------|-----------------|----------------|----|----|----|
| WRC21/15MN | 7.5 x 4.5 x 5.3 | 50 | 19 | 31 | - |
| WRC27/20MN | 7.5 x 4.5 x 5.3 | 60 | 32 | 46 | 50 |
| WRC21/15MN...C | 7.5 x 4.5 x 5.3 | 50 | 19 | 31 | - |
| WRC27/20MN...C | 7.5 x 4.5 x 5.3 | 60 | 32 | 46 | 50 |

WRC FN

Flanged block, available both with and without ball chain. Versions with ball chain are indicated with ...C in the designation in the table below.

For high load applications or any application where severe chock-loads may occur, the standard version offers better safety margins by its higher static limit (C0). For light to medium loads where a very long lifetime is required, the ball-cage will show superior life span and reliability.

Please note that ball chain versions must never be used for linear speeds exceeding 3 m/s!

Size 21/15 delivered with straight standard nipple.
Size 27/20 delivered with angled standard nipple.

Lubrications injections ports on the block:

N1: Front of the block. All blocks are delivered with front mounted standard grease nipple.

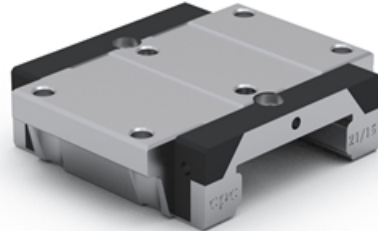
N2: Side of the block. The side lubrication injection port is sealed on delivery to prevent leakage of lubrication.

N3: Top of the block with an O-ring seal. The top lubrication injection port is sealed on delivery to prevent leakage of lubrication.

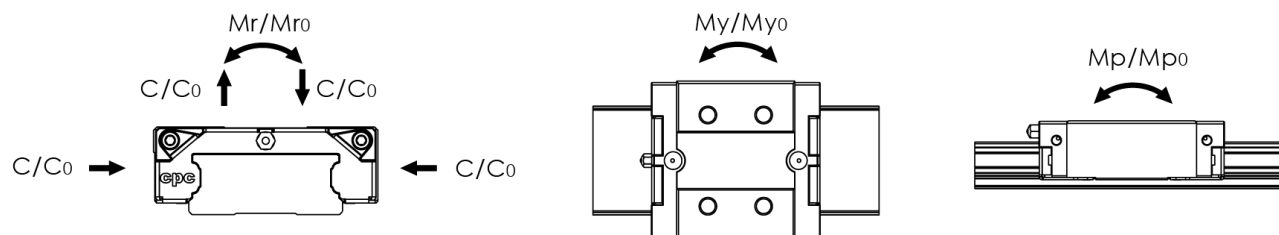
Dimensions in mm.

Lead times in the table below are only indications. Choice of preload, accuracy class and other options will affect lead time. Please contact us for exact delivery time for your request.

For more information about calculation of life, load rating and static moment see Technical information.



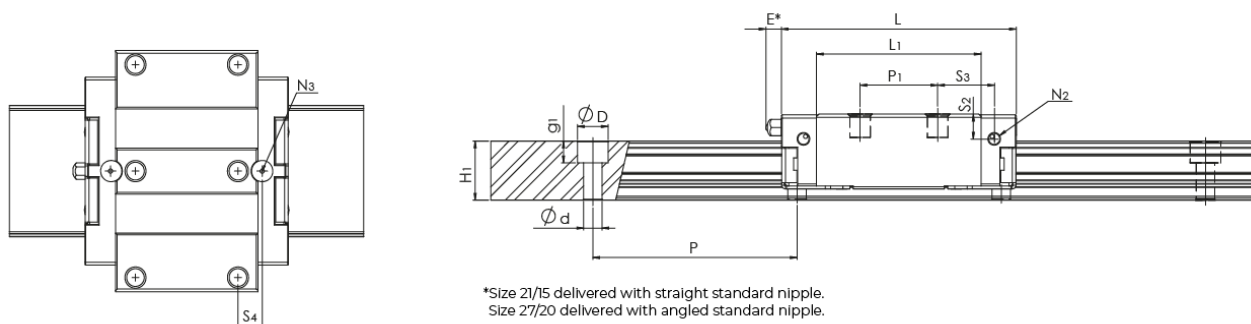
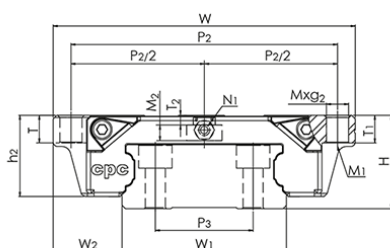
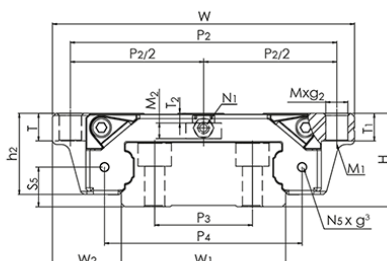
General Data



| Designation | Dynamic Load Capacity C (N) | Static Load Capacity C0 (N) | Static Moment Mr0 (Nm) | Static Moment Mp0 (Nm) | Static Moment My0 (Nm) |
|-----------------------|-----------------------------|-----------------------------|------------------------|------------------------|------------------------|
| WRC21/15FN | 9900 | 17500 | 315 | 105 | 105 |
| WRC27/20FN | 17100 | 30000 | 634 | 230 | 230 |
| WRC21/15FN...C | 11800 | 16200 | 295 | 95 | 95 |
| WRC27/20FN...C | 22300 | 25700 | 535 | 200 | 200 |

| Designation | Dynamic Moment Mr (Nm) | Dynamic Moment Mp (Nm) | Dynamic Moment My (Nm) | Weight Block (g) |
|-----------------------|------------------------|------------------------|------------------------|------------------|
| WRC21/15FN | 178 | 59 | 59 | 198 |
| WRC27/20FN | 361 | 131 | 131 | 553 |
| WRC21/15FN...C | 215 | 69 | 69 | 198 |
| WRC27/20FN...C | 464 | 174 | 174 | 553 |

Dimensions


WRC21/15FN

WRC27/20FN


| Designation | L | W | H | L1 | H1 | h2 | W1 | W2 | S1 |
|----------------|------|----|----|------|------|------|----|------|-----|
| WRC21/15FN | 57.5 | 68 | 21 | 40.3 | 14.4 | 18.3 | 37 | 15.5 | 3.3 |
| WRC27/20FN | 70 | 80 | 27 | 52 | 18.5 | 23.5 | 42 | 19 | 4.5 |
| WRC21/15FN...C | 57.5 | 68 | 21 | 40.3 | 14.4 | 18.3 | 37 | 15.5 | 3.3 |
| WRC27/20FN...C | 70 | 80 | 27 | 52 | 18.5 | 23.5 | 42 | 19 | 4.5 |

| Designation | S2 | S3 | S4 | S5 | E | T | N1 | N2 | N3 | M x g2 |
|----------------|-----|-----|-----|----|-----|---|----|------|----|--------|
| WRC21/15FN | 6.1 | 8.9 | 6.9 | - | 5.3 | 7 | M3 | M3x3 | P3 | M5x7 |
| WRC27/20FN | 8 | 9.2 | 7.5 | 11 | 5.3 | 9 | M3 | M3x4 | P4 | M6x9 |
| WRC21/15FN...C | 6.1 | 8.9 | 6.9 | - | 5.3 | 7 | M3 | M3x3 | P3 | M5x7 |
| WRC27/20FN...C | 8 | 9.2 | 7.5 | 11 | 5.3 | 9 | M3 | M3x4 | P4 | M6x9 |

| Designation | D x d x g1 | Hole Pitch (P) | M1 | M2 | P1 | P2 | P4 | t1 | T1 | T2 |
|----------------|-----------------|----------------|----|-----|----|----|----|----|----|-----|
| WRC21/15FN | 7.5 x 4.5 x 5.3 | 50 | M4 | 2.1 | 29 | 60 | - | 7 | 7 | 3.6 |
| WRC27/20FN | 7.5 x 4.5 x 5.3 | 60 | M5 | 4.6 | 40 | 70 | 50 | 9 | 9 | 3 |
| WRC21/15FN...C | 7.5 x 4.5 x 5.3 | 50 | M4 | 2.1 | 29 | 60 | - | 7 | - | 3.6 |
| WRC27/20FN...C | 7.5 x 4.5 x 5.3 | 60 | M5 | 4.6 | 40 | 70 | 50 | 9 | - | 3 |

WRC Rail

Counterbore from above.

Cut to length acc. to request.

Rails can be joint together for extra long lengths.

Contact Rollco for more information.

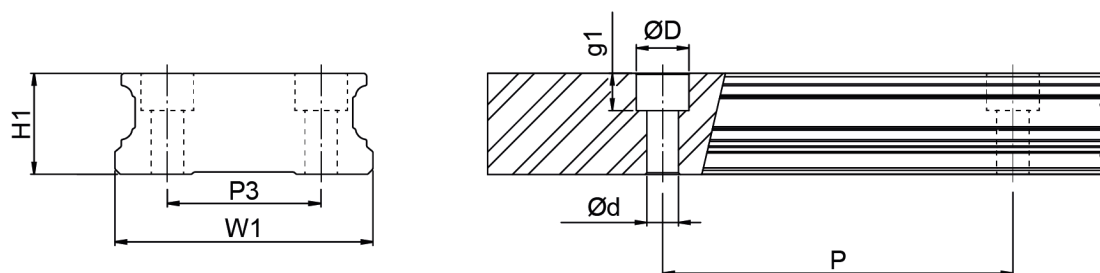
Dimensions in mm.



General Data

| Designation | Weight Rail (g/m) | Length (mm) |
|-------------|-------------------|-------------|
| WRC21/15 | 3596 | 4000 |
| WRC27/20 | 5259 | 4000 |

Dimensions



| Designation | H1 | W1 | D x d x g1 | Hole Pitch (P) | P3 |
|-----------------|------|----|-----------------|----------------|----|
| WRC21/15 | 14.4 | 37 | 7.5 x 4.5 x 5.3 | 50 | 22 |
| WRC27/20 | 18.5 | 42 | 7.5 x 4.5 x 5.3 | 60 | 24 |

WRU Rail

Tapped from the bottom.
Cut to length acc. to request.
Rails can be joint together for extra long lengths.
Contact Rollco for more information.

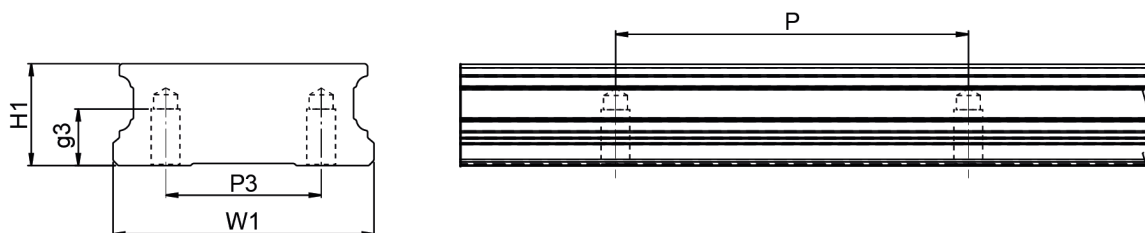
Dimensions in mm.



General Data

| Designation | Weight Rail (g/m) | Length (mm) |
|-------------|-------------------|-------------|
| WRU21/15 | 3596 | 4000 |
| WRU27/20 | 5259 | 4000 |

Dimensions



| Designation | H1 | W1 | Hole Pitch (P) | M x g3 | P3 |
|-----------------|------|----|----------------|----------|----|
| WRU21/15 | 14.4 | 37 | 50 | M4 x 8 | 22 |
| WRU27/20 | 18.5 | 42 | 60 | M5 x 7.5 | 24 |

Metal-Plastic Cap

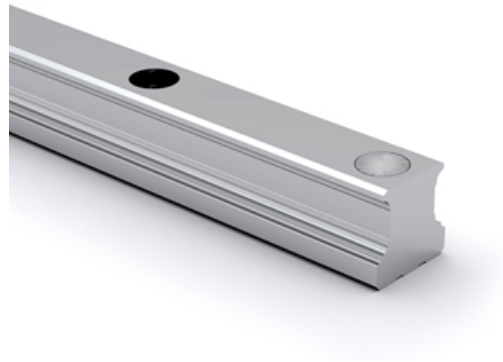
The top of the cap is made of stainless steel and prevents dirt or scrap from piling up in the bolt hole, which may affect the end seal function.

The lower part of the cap is made of plastic and can be installed directly on the standard rail. There is no need to conduct other fine slot milling for bolt-hole.

The bolt-hole chamfer for standard rail is C0.2 mm. A non-bolt-hole chamfer rail is available on request for absolutely dust-proof applications. Please contact us for more information.

The cap is designed with supporting block to prop up the cap, fix the screw stably and prevent it from sinking.

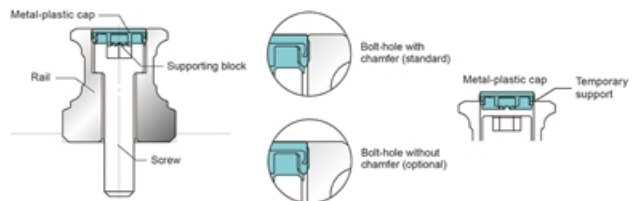
Dimensions in mm.



Cap before hammering
(Plastic support)



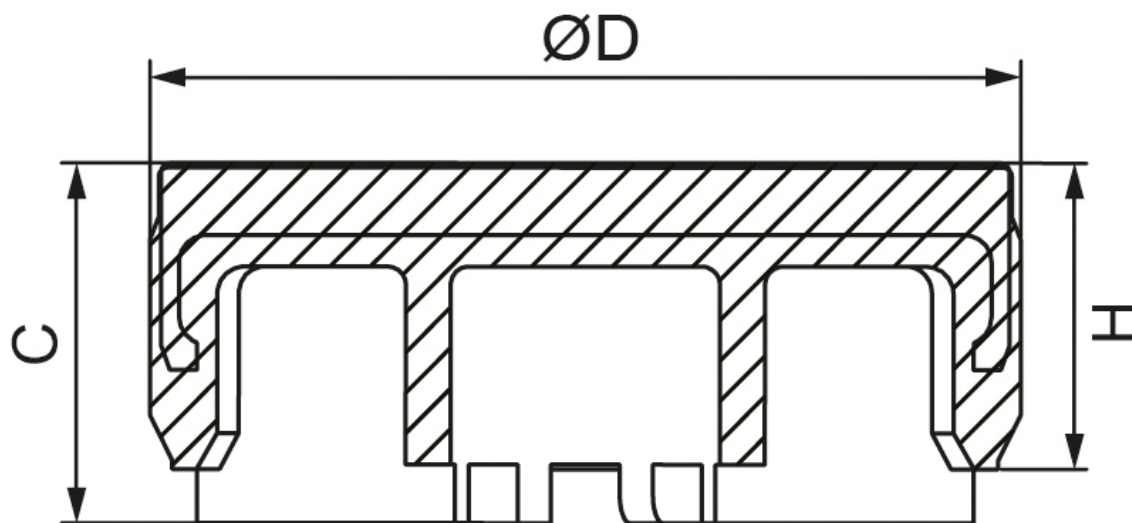
Plastic support after hammering
(8 supporting block become deformed,
and fit with the screw.)



General Data

| Designation | Compatible with | Screw Type |
|-------------|--------------------|------------|
| MPC-A4 | WRC21/15, WRC27/20 | M4 |

Dimensions



| Designation | H | C | D |
|-------------|-----|-----|-----|
| MPC-A4 | 1.7 | 2.0 | 7.7 |