

## Table of contents

- **WRC MN**
- **WRC FN**
- **WRC Rail**
- **WRU Rail**
- **Metal-Plastic Cap**
- **RA Grease**

## WRC MN

Standard block, available both with and without ball chain. Versions with ball chain are indicated with ...C in the designation in the table below.

For high load applications or any application where severe chock-loads may occur, the standard version offers better safety margins by its higher static limit (C0). For light to medium loads where a very long lifetime is required, the ball-cage will show superior life span and reliability.

Please note that ball chain versions must never be used for linear speeds exceeding 3 m/s!

Size 21/15 delivered with straight standard nipple.  
Size 27/20 delivered with angled standard nipple.

Lubrications injections ports on the block:

N1: Front of the block. All blocks are delivered with front mounted standard grease nipple.

N2: Side of the block. The side lubrication injection port is sealed on delivery to prevent leakage of lubrication.

N3: Top of the block with an O-ring seal. The top lubrication injection port is sealed on delivery to prevent leakage of lubrication.

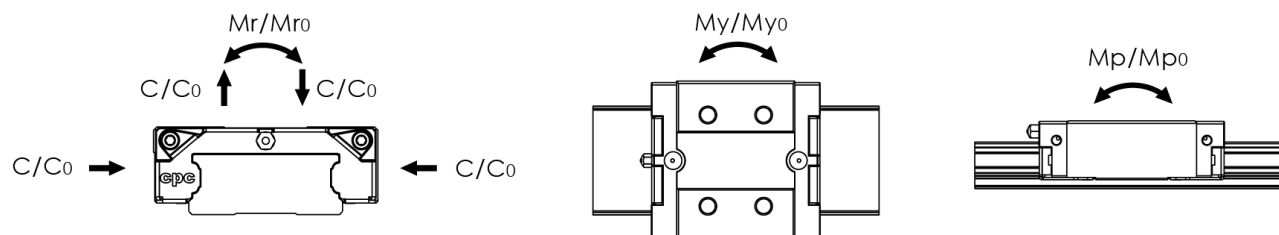
Dimensions in mm.

Lead times in the table below are only indications. Choice of preload, accuracy class and other options will affect lead time. Please contact us for exact delivery time for your request.

For more information about calculation of life, load rating and static moment see Technical information.



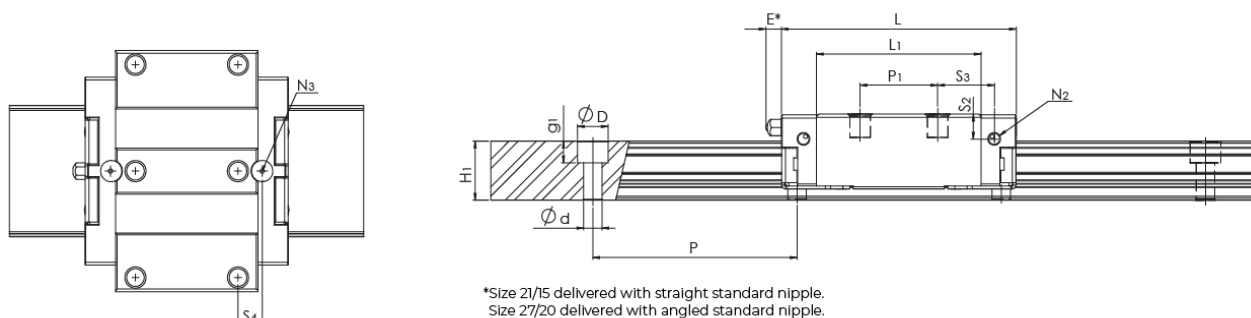
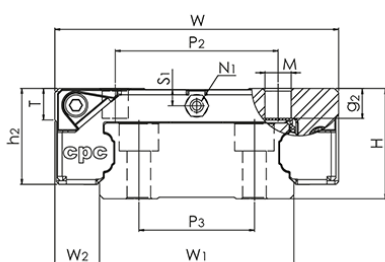
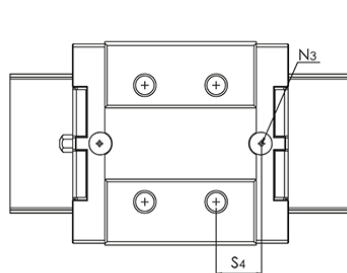
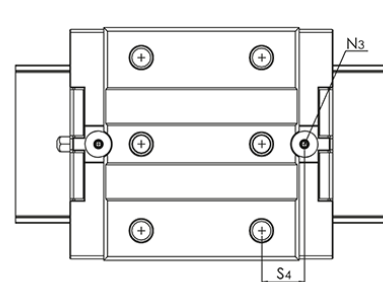
## General Data



Designation	Dynamic Load Capacity C (N)	Static Load Capacity C0 (N)	Static Moment Mr0 (Nm)	Static Moment Mp0 (Nm)	Static Moment My0 (Nm)
<b>WRC21/15MN</b>	9900	17500	315	105	105
<b>WRC27/20MN</b>	17100	30000	634	230	230
<b>WRC21/15MN...C</b>	11800	16200	295	95	95
<b>WRC27/20MN...C</b>	22300	25700	535	200	200

Designation	Dynamic Moment Mr (Nm)	Dynamic Moment Mp (Nm)	Dynamic Moment My (Nm)	Weight Block (g)
<b>WRC21/15MN</b>	178	59	59	160
<b>WRC27/20MN</b>	361	131	131	320
<b>WRC21/15MN...C</b>	215	69	69	160
<b>WRC27/20MN...C</b>	464	174	174	320

## Dimensions


**WRC MN**

**WRC21/15MN**

**WRC27/20MN**


Designation	L	W	H	L1	H1	h2	W1	W2	S1
<b>WRC21/15MN</b>	57.5	54	21	40.3	14.4	18.3	37	8.5	3.3
<b>WRC27/20MN</b>	70	62	27	52	18.5	23.5	42	10	4.5
<b>WRC21/15MN...C</b>	57.5	54	21	40.3	14.4	18.3	37	8.5	3.3
<b>WRC27/20MN...C</b>	70	62	27	52	18.5	23.5	42	10	4.5

Designation	S2	S3	S4	S5	E	T	N1	N2	N3	M x g2
<b>WRC21/15MN</b>	6.1	13.9	11.9	-	5.3	6	M3	M3x3	P3	M5x5
<b>WRC27/20MN</b>	8	13.2	11.5	11	5.3	10	M3	M3x4	P4	M6x6
<b>WRC21/15MN...C</b>	6.1	13.9	11.9	-	5.3	6	M3	M3x3	P3	M5x5
<b>WRC27/20MN...C</b>	8	13.2	11.5	11	5.3	10	M3	M3x4	P4	M6x6

Designation	D x d x g1	Hole Pitch (P)	P1	P2	P4
<b>WRC21/15MN</b>	7.5 x 4.5 x 5.3	50	19	31	-
<b>WRC27/20MN</b>	7.5 x 4.5 x 5.3	60	32	46	50
<b>WRC21/15MN...C</b>	7.5 x 4.5 x 5.3	50	19	31	-
<b>WRC27/20MN...C</b>	7.5 x 4.5 x 5.3	60	32	46	50

## WRC FN

Flanged block, available both with and without ball chain. Versions with ball chain are indicated with ...C in the designation in the table below.

For high load applications or any application where severe chock-loads may occur, the standard version offers better safety margins by its higher static limit (C0). For light to medium loads where a very long lifetime is required, the ball-cage will show superior life span and reliability.

Please note that ball chain versions must never be used for linear speeds exceeding 3 m/s!

Size 21/15 delivered with straight standard nipple.  
Size 27/20 delivered with angled standard nipple.

Lubrications injections ports on the block:

N1: Front of the block. All blocks are delivered with front mounted standard grease nipple.

N2: Side of the block. The side lubrication injection port is sealed on delivery to prevent leakage of lubrication.

N3: Top of the block with an O-ring seal. The top lubrication injection port is sealed on delivery to prevent leakage of lubrication.

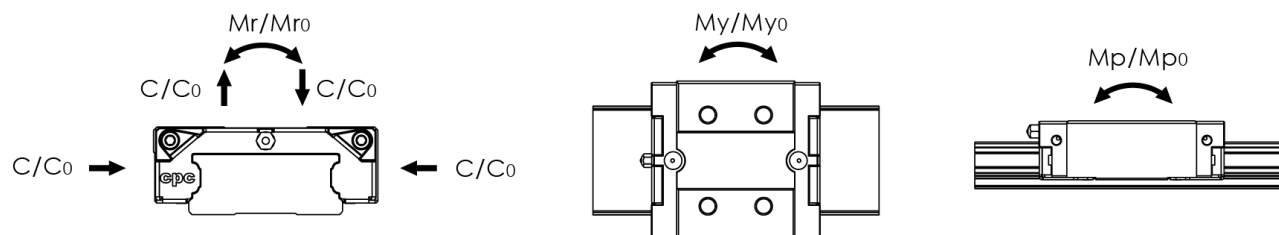
Dimensions in mm.

Lead times in the table below are only indications. Choice of preload, accuracy class and other options will affect lead time. Please contact us for exact delivery time for your request.

For more information about calculation of life, load rating and static moment see Technical information.



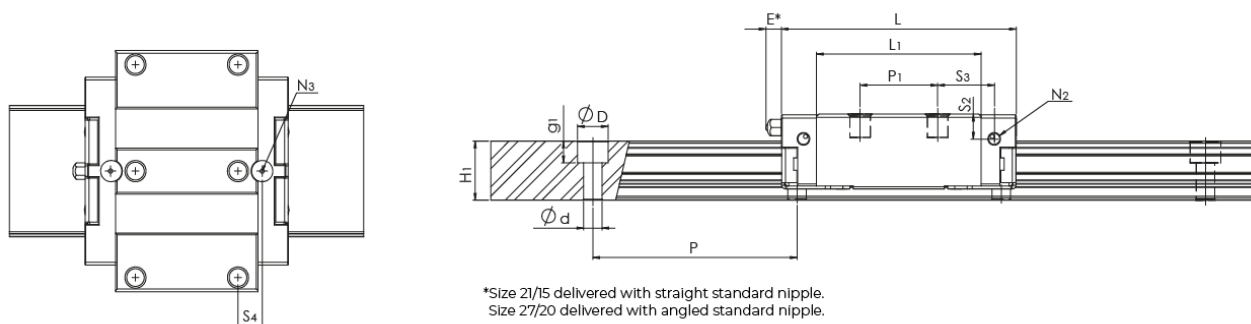
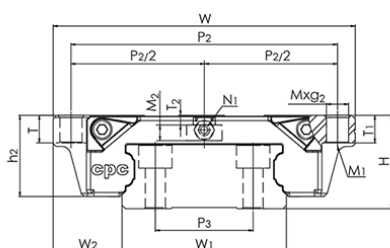
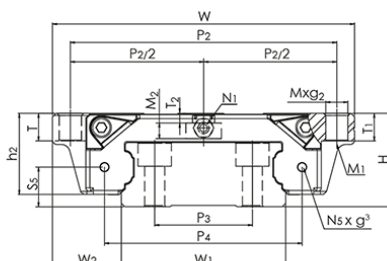
## General Data



Designation	Dynamic Load Capacity C (N)	Static Load Capacity C0 (N)	Static Moment Mr0 (Nm)	Static Moment Mp0 (Nm)	Static Moment My0 (Nm)
<b>WRC21/15FN</b>	9900	17500	315	105	105
<b>WRC27/20FN</b>	17100	30000	634	230	230
<b>WRC21/15FN...C</b>	11800	16200	295	95	95
<b>WRC27/20FN...C</b>	22300	25700	535	200	200

Designation	Dynamic Moment Mr (Nm)	Dynamic Moment Mp (Nm)	Dynamic Moment My (Nm)	Weight Block (g)
<b>WRC21/15FN</b>	178	59	59	198
<b>WRC27/20FN</b>	361	131	131	553
<b>WRC21/15FN...C</b>	215	69	69	198
<b>WRC27/20FN...C</b>	464	174	174	553

## Dimensions


**WRC21/15FN**

**WRC27/20FN**


Designation	L	W	H	L1	H1	h2	W1	W2	S1
<b>WRC21/15FN</b>	57.5	68	21	40.3	14.4	18.3	37	15.5	3.3
<b>WRC27/20FN</b>	70	80	27	52	18.5	23.5	42	19	4.5
<b>WRC21/15FN...C</b>	57.5	68	21	40.3	14.4	18.3	37	15.5	3.3
<b>WRC27/20FN...C</b>	70	80	27	52	18.5	23.5	42	19	4.5

Designation	S2	S3	S4	S5	E	T	N1	N2	N3	M x g2
<b>WRC21/15FN</b>	6.1	8.9	6.9	-	5.3	7	M3	M3x3	P3	M5x7
<b>WRC27/20FN</b>	8	9.2	7.5	11	5.3	9	M3	M3x4	P4	M6x9
<b>WRC21/15FN...C</b>	6.1	8.9	6.9	-	5.3	7	M3	M3x3	P3	M5x7
<b>WRC27/20FN...C</b>	8	9.2	7.5	11	5.3	9	M3	M3x4	P4	M6x9

Designation	D x d x g1	Hole Pitch (P)	M1	M2	P1	P2	P4	t1	T1	T2
<b>WRC21/15FN</b>	7.5 x 4.5 x 5.3	50	M4	2.1	29	60	-	7	7	3.6
<b>WRC27/20FN</b>	7.5 x 4.5 x 5.3	60	M5	4.6	40	70	50	9	9	3
<b>WRC21/15FN...C</b>	7.5 x 4.5 x 5.3	50	M4	2.1	29	60	-	7	-	3.6
<b>WRC27/20FN...C</b>	7.5 x 4.5 x 5.3	60	M5	4.6	40	70	50	9	-	3

## WRC Rail

Counterbore from above.

Cut to length acc. to request.

Rails can be joint together for extra long lengths.

Contact Rollco for more information.

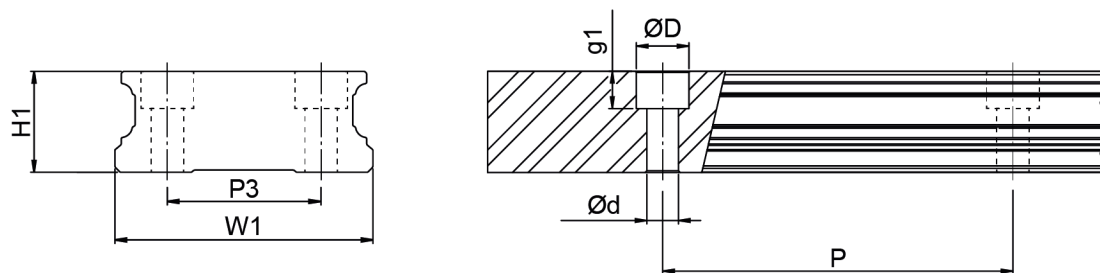
Dimensions in mm.



## General Data

Designation	Weight Rail (g/m)	Length (mm)
WRC21/15	3596	4000
WRC27/20	5259	4000

## Dimensions



Designation	H1	W1	D x d x g1	Hole Pitch (P)	P3
<b>WRC21/15</b>	14.4	37	7.5 x 4.5 x 5.3	50	22
<b>WRC27/20</b>	18.5	42	7.5 x 4.5 x 5.3	60	24

## WRU Rail

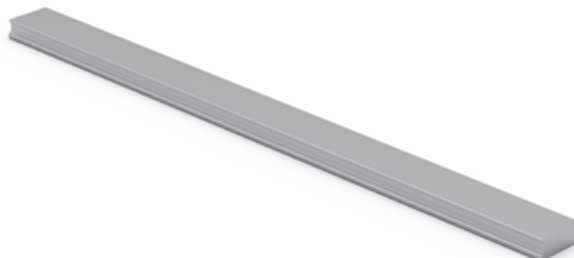
Tapped from the bottom.

Cut to length acc. to request.

Rails can be joint together for extra long lengths.

Contact Rollco for more information.

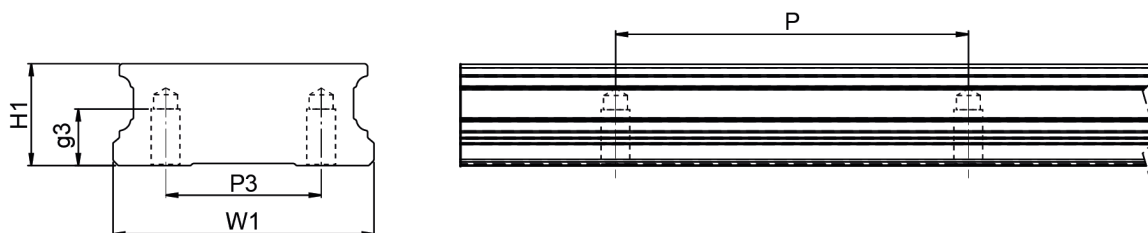
Dimensions in mm.



## General Data

Designation	Weight Rail (g/m)	Length (mm)
WRU21/15	3596	4000
WRU27/20	5259	4000

## Dimensions



Designation	H1	W1	Hole Pitch (P)	M x g3	P3
<b>WRU21/15</b>	14.4	37	50	M4 x 8	22
<b>WRU27/20</b>	18.5	42	60	M5 x 7.5	24

## Metal-Plastic Cap

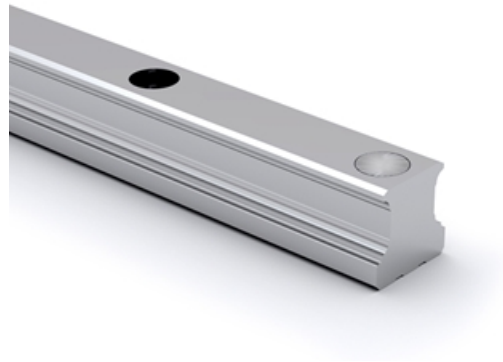
The top of the cap is made of stainless steel and prevents dirt or scrap from piling up in the bolt hole, which may affect the end seal function.

The lower part of the cap is made of plastic and can be installed directly on the standard rail. There is no need to conduct other fine slot milling for bolt-hole.

The bolt-hole chamfer for standard rail is C0.2 mm. A non-bolt-hole chamfer rail is available on request for absolutely dust-proof applications. Please contact us for more information.

The cap is designed with supporting block to prop up the cap, fix the screw stably and prevent it from sinking.

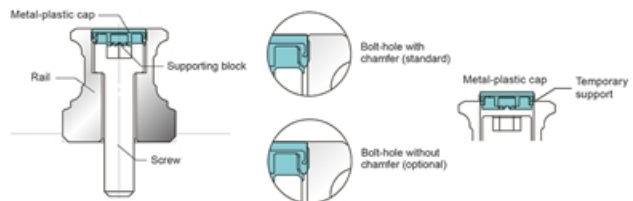
Dimensions in mm.



Cap before hammering  
(Plastic support)



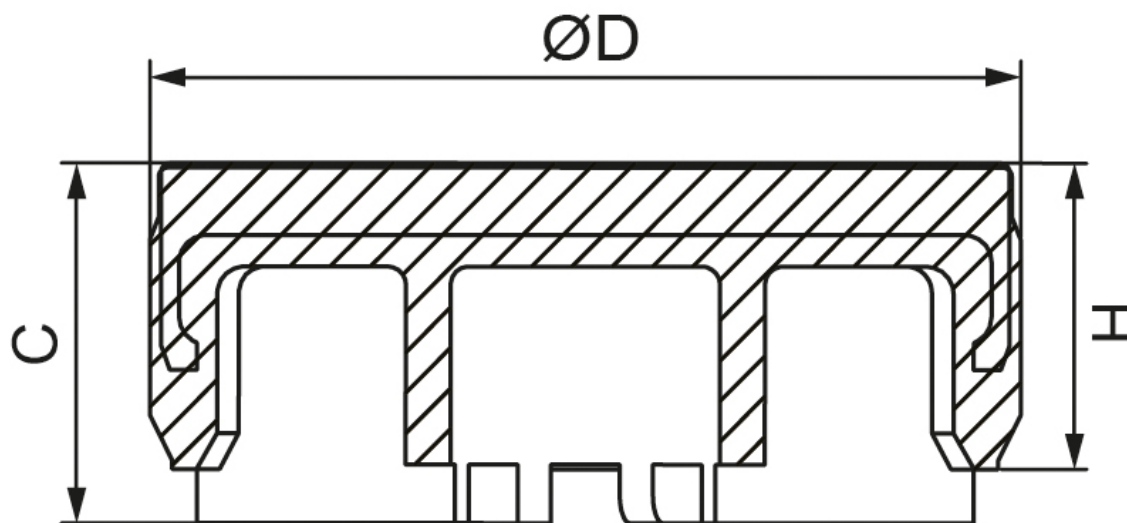
Plastic support after hammering  
(8 supporting block become deformed,  
and fit with the screw.)



## General Data

Designation	Compatible with	Screw Type
<b>MPC-A4</b>	WRC21/15, WRC27/20	M4

## Dimensions



Designation	H	C	D
MPC-A4	1.7	2.0	7.7

## RA Grease

NLGI grade 1.5

Clear grease based on synthetic oils and PTFE. Will fulfil all severe specifications from bearing manufacturers, industrial applications and vehicle producers. Very suitable for use where long service life is required and desired. The specific rheological properties of the lubricant will give very low good flow properties of the grease at extremely low temperatures, at the same time the high film strength and thickness will guarantee lubrication also at elevated temperatures. The type of PTFE used will adhere strongly to all surfaces lubricated and give a very low friction coefficient. The grease is water resistant, withstands oxidation, has very good mechanical stability, is completely non-toxic and provides a very wide application temperature range.

**Temperature:** -40 to +260 °C (application range)



## General Data

Designation	Remark	Colour	Weight (g)
RA Grease NLGI 1.5	Cartridge package	Translucent white	400 g