

## CPK bevel gearbox

The most economical right-angle planetary gearbox. Based on the CP gearbox with an additional bevel-gear input stage. Used where space-constraints does not allow an in-line assembly with the motor. The stated maximal backlash is kept throughout the lifetime of the gearbox.

**Ratio:** 3-100

**Max. Torque (Nm):** 14 - 700

**Other models:** food-grade lubrication

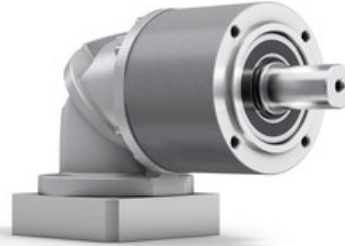
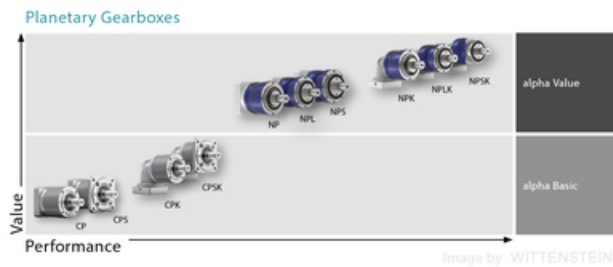


Image by WITTENSTEIN



## Product Data

Designation	Size	Ratio
CPK005	005	4 / 5 / 7 / 8 / 10 / 16 / 20 / 25 / 28 / 35 / 40
CPK015	015	3 / 4 / 5 / 7 / 8 / 9 / 10 / 12 / 15 / 16 / 20 / 25 / 28 / 30 / 35 / 40 / 50 / 70 / 100
CPK025	025	3 / 4 / 5 / 7 / 8 / 9 / 10 / 12 / 15 / 16 / 20 / 25 / 28 / 30 / 35 / 40 / 50 / 70 / 100
CPK035	035	3 / 4 / 5 / 7 / 8 / 9 / 10 / 12 / 15 / 16 / 20 / 25 / 28 / 30 / 35 / 40 / 50 / 70 / 100
CPK045	045	5 / 8 / 10 / 25 / 50 / 100