

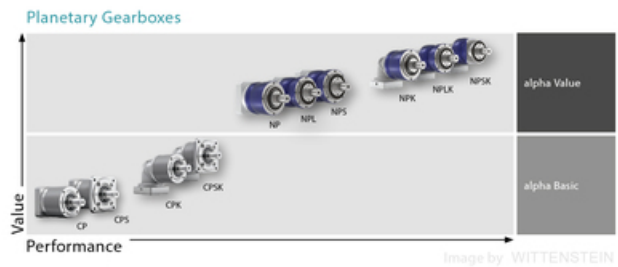
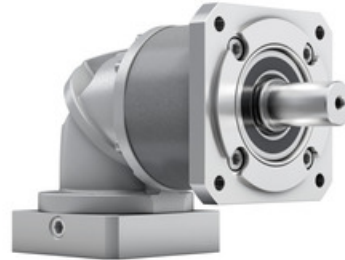
CPSK bevel gearbox

The right-angle gearboxes of the alpha Basic Line are specially designed for applications with medium requirements for positioning accuracy. The extremely compact bevel gear stage enables use in applications with space constraints.

Ratio: 3-100

Max Torque (Nm): 14 - 700

Other models: food-grade lubrication



Product Data

Designation	Remark	Size	Ratio
CPSK015	Compatible with Linear unit RHL80 + Adapter kit RHL80	015	3 / 4 / 5 / 7 / 8 / 9 / 10 / 12 / 15 / 16 / 20 / 25 / 28 / 30 / 35 / 40 / 50 / 70 / 100
CPSK025	-	025	3 / 4 / 5 / 7 / 8 / 9 / 10 / 12 / 15 / 16 / 20 / 25 / 28 / 30 / 35 / 40 / 50 / 70 / 100
CPSK035	Compatible with Linear unit RHL110 + Adapter kit RHL100	035	3 / 4 / 5 / 7 / 8 / 9 / 10 / 12 / 15 / 16 / 20 / 25 / 28 / 30 / 35 / 40 / 50 / 70 / 100