

## NPLK bevel gearbox

Versatile right-angle planetary gearbox. Based on the NPL gearbox with an additional bevel-gear input stage. Used where space-constraints does not allow an in-line assembly with the motor. With LP+ B14 output geometry. Smooth or keyed cylindrical output shaft or DIN 5480 involute splined shaft. Reinforced output bearings enable applications with high radial and axial shaft loads. The stated maximal backlash is kept throughout the lifetime of the gearbox.

Contact Rollco for CAD-files.

**Ratio:** 3-100

**Max. Torque (Nm):** 33 - 700

**Other models:** food-grade lubrication

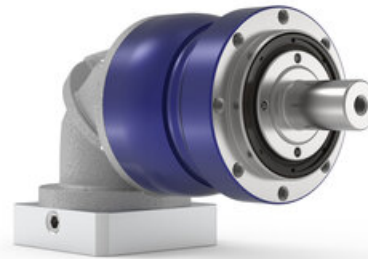
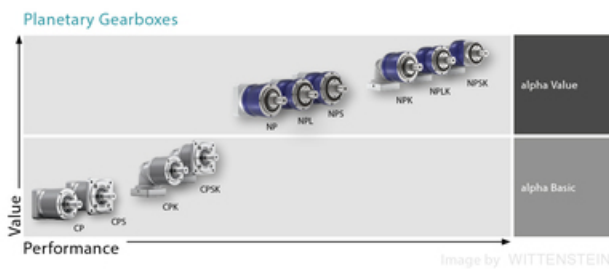


Image by WITTENSTEIN



## General Data

Designation	Ratio	Size
<b>NPLK015</b>	3 / 4 / 5 / 7 / 8 / 10 / 12 / 15 / 16 / 20 / 25 / 28 / 30 / 32 / 35 / 40 / 50 / 64 / 70 / 100 (Gearbox model standard)	015
<b>NPLK025</b>	3 / 4 / 5 / 7 / 8 / 9 / 10 / 12 / 15 / 16 / 20 / 25 / 28 / 30 / 32 / 35 / 40 / 50 / 64 / 70 / 100 (Gearbox model standard)	025
<b>NPLK035</b>	3 / 4 / 5 / 7 / 8 / 9 / 10 / 12 / 15 / 16 / 20 / 25 / 28 / 30 / 32 / 35 / 40 / 50 / 64 / 70 / 100 (Gearbox model standard)	035
<b>NPLK045</b>	5 / 8 / 10 / 25 / 32 / 50 / 64 / 100 (Gearbox model standard)	045