

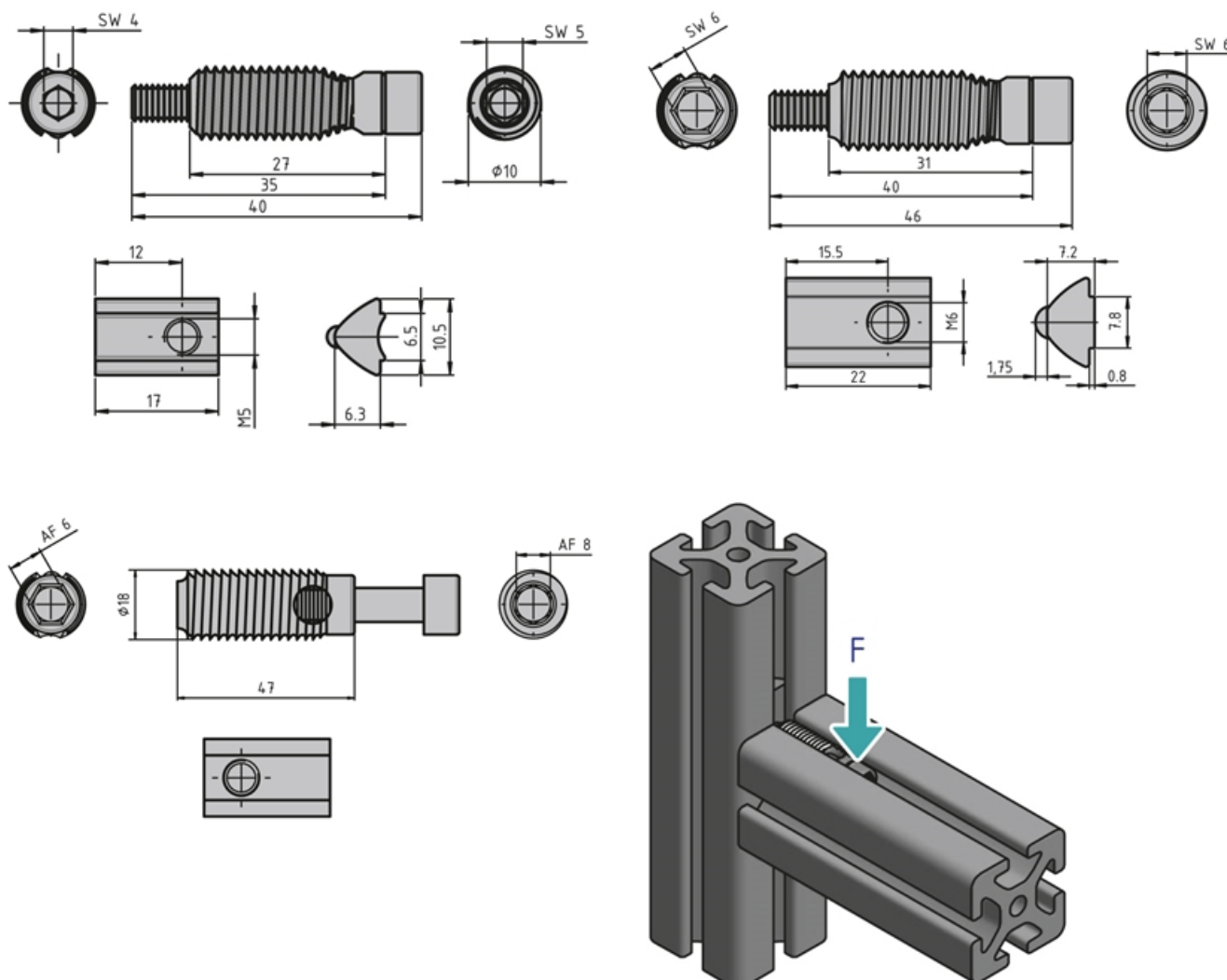
## Automatic Connectors

The set of automatic connectors mount quickly and easily because there is no need for modifying the profiles. Universal force-fit link for all profiles from the same series plus the option of moving them afterwards because the connectors are fitted in a single profile only. There is no restriction on installing them in existing constructions later.

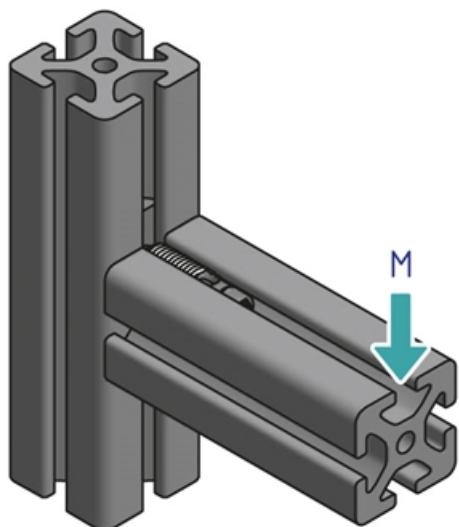
Note: We recommend that you install them in pairs – this is also what the stress data refers to.

**System:** 30 - Slot 6; 20 - Slot 5

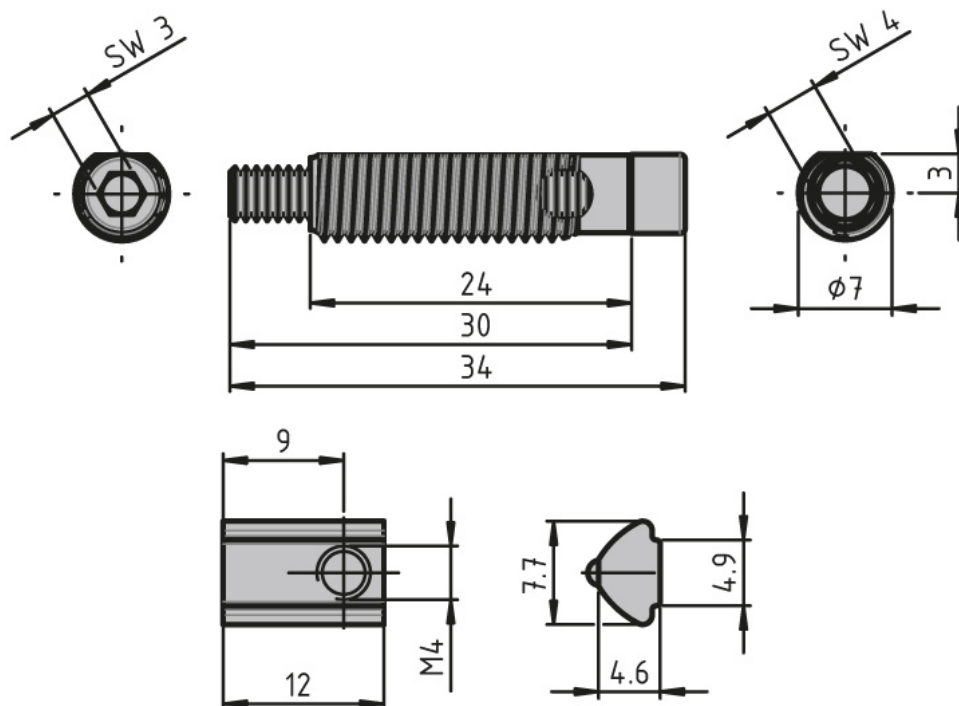
**Type:** Fasteners



## Automatic Connectors



## General Data



Designation	Description	System	Material	M (Nm)	F (N)
<b>PV4035</b>	Automatic connector including slot nut with guide step	20 - Slot 5	Galvanised steel	12.5	350
<b>PV1203</b>	Automatic connector including slot nut with guide step	20 - Slot 5	Stainless steel	20	250
<b>PV3045</b>	Automatic connector including slot nut with guide step	30 - Slot 6	Galvanised steel	40	600
<b>PZ3905</b>	Automatic connector including slot nut with guide step	30 - Slot 6	Stainless steel	30	400