

## Ball Head 15 with Female Thread

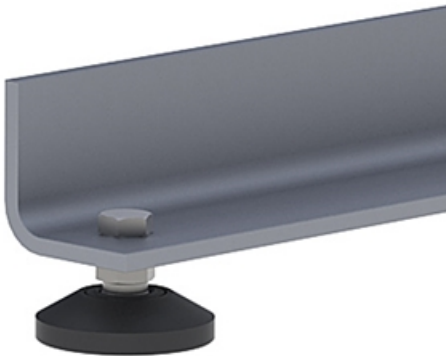
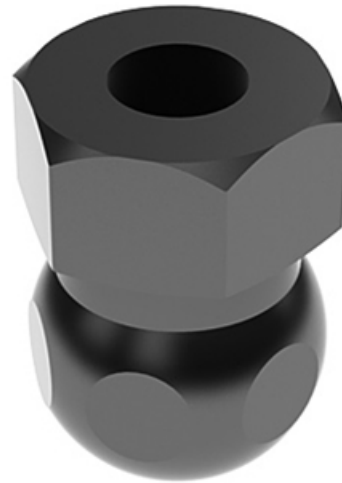
Directly links knuckle feet by means of a standard screw.

For hinged steel/stainless steel knuckle feet

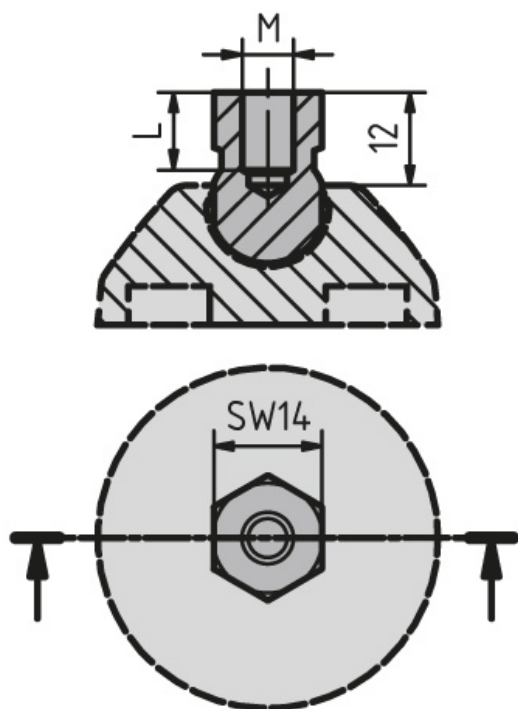
Material: Galvanised/stainless steel: 1.4305

**System:** 30 - Slot 6; 20 - Slot 5

**Type:** Feet



## General Data



Designation	Description	Material	MxL
<b>PZ5154</b>	Ball 15	Galvanised steel	6x10
<b>PZ5155</b>	Ball 15	Stainless steel	6x10
<b>PZ5156</b>	Ball 15	Galvanised steel	8x10
<b>PZ5157</b>	Ball 15	Stainless steel	8x10