

Height-Adjustable Floor Angle

Creates a height-adjustable link between aluminium profiles and the floor.

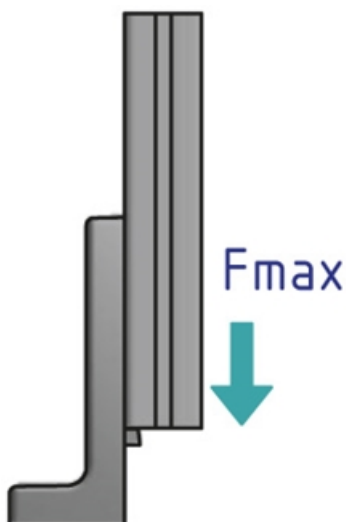
Package includes the adjustment screw and threaded plate.

Material: Die-cast zinc

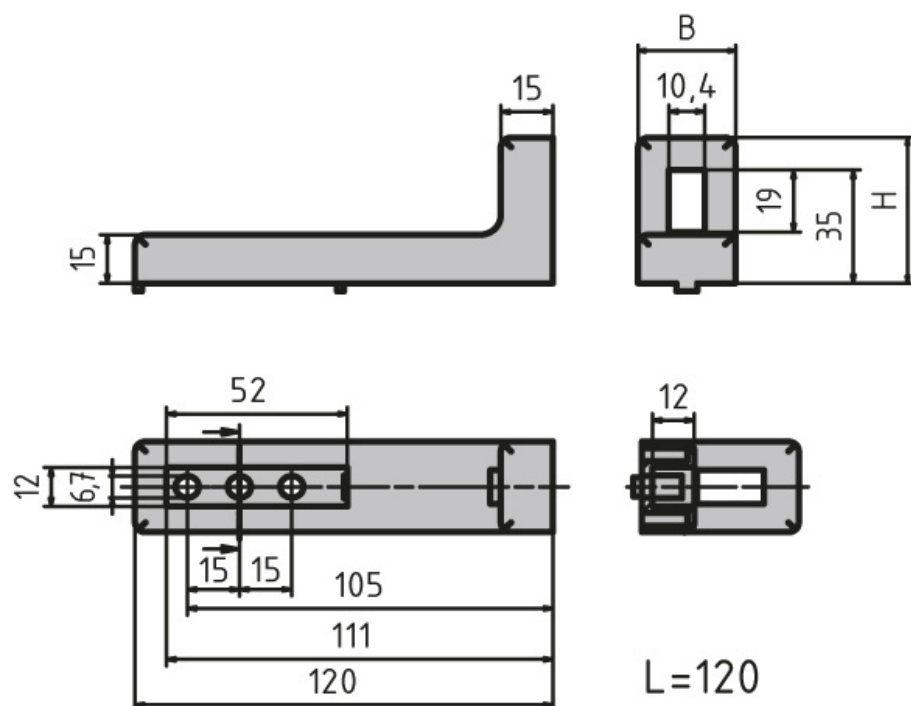
Note: To install the ESD-ready floor angles, use a notched slot nut in order to make a conductive link.

System: 30 - Slot 6; 20 - Slot 5

Type: Feet



General Data



| Designation | Material | ESD | Fmax (N) | L x H x W |
|---------------|---------------------|-----|----------|---------------|
| PZ5021 | Uncoated | Yes | 2500 | 120 x 45 x 28 |
| PZ3081 | Black powder coated | - | 2500 | 120 x 45 x 28 |