

## Handle AL

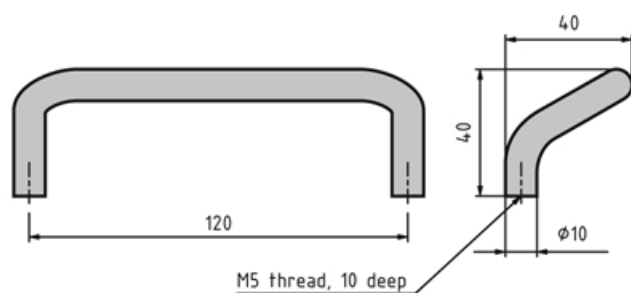
Stable aluminium handles.

Use the bent variant to minimise the risk of crushing.

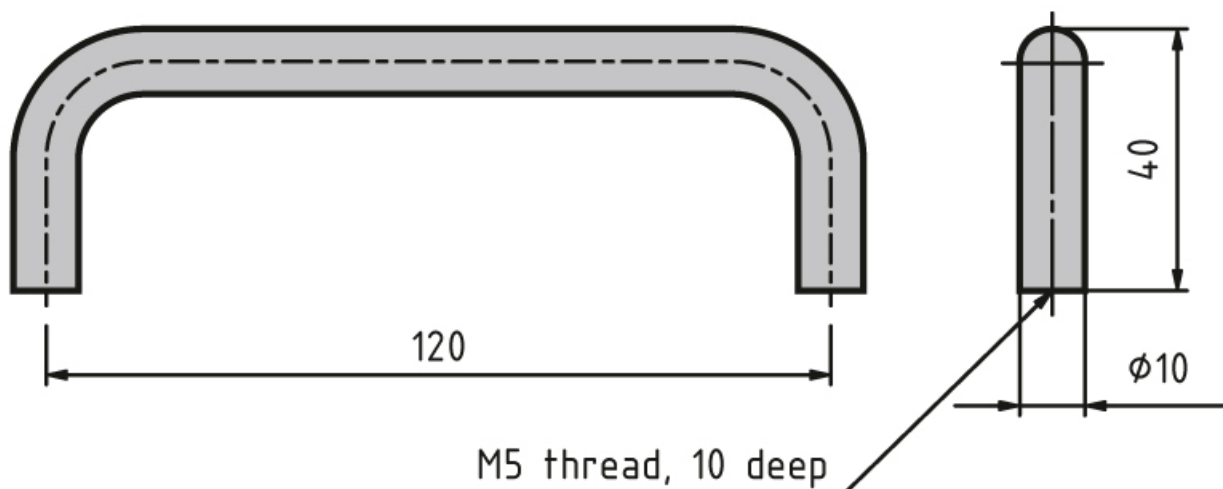
For sliding and swing doors.

**System:** 40 - Slot 8; 30 - Slot 6

**Type:** Handles



## General Data



Designation	Description
PZ1590	Handle AL120
PZ1595	Handle AL120, bent
PZ1600	Mounting kit for handle AL120, 2 lugs 120 GD-ZN, 2 M5 × 10 countersunk screws (DIN7991)