

## Ball Catch

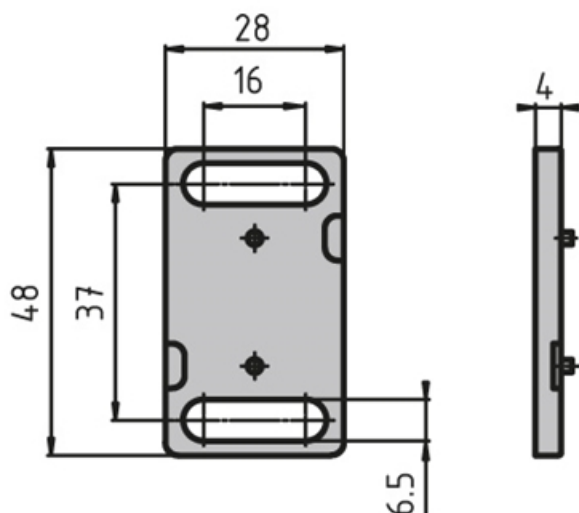
Quick acting door opener; adapts to the surface element thickness.

Mount: By M6 screw

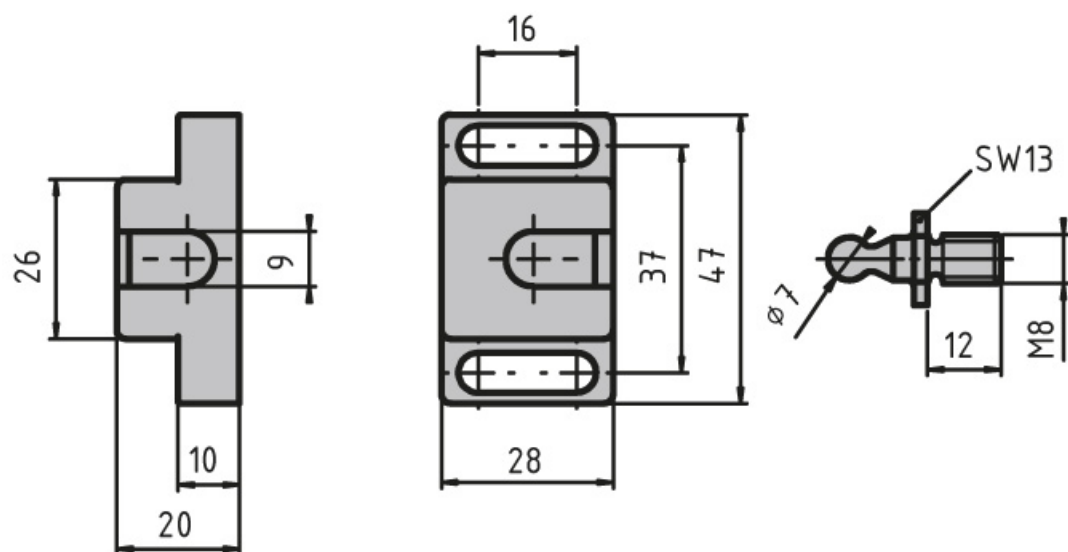
Material: Black plastic (PA)

**System:** 40 - Slot 8; 30 - Slot 6; 20 - Slot 5

**Type:** Door Latches & Interlocks



## General Data



Designation	Description	Retaining screw	Locking force (N)
<b>PZ1615</b>	Light-duty ball catch	M8 × 12, Galvanised steel	~ 40
<b>PZ5052</b>	Light-duty ball catch	M8 × 12, Stainless steel	~ 40
<b>PZ5053</b>	Heavy-duty ball catch	M8 × 12, Stainless steel	~ 50
<b>PZ5054</b>	Heavy-duty ball catch	M8 × 12, Galvanised steel	~ 50
<b>PZ5055</b>	Ball catch spacer	-	-