

## Magnetic Catch

Easy closing of sliding and swing doors.  
Adapts to the thickness of surface elements.

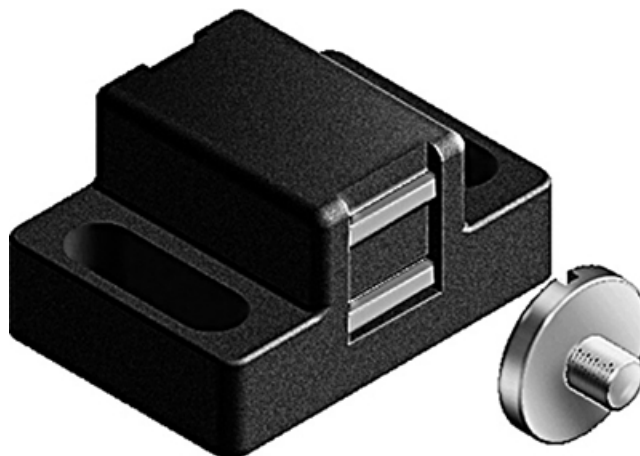
Mount Slot 5: by M4 × 5 screw (DIN921), galvanised steel

Mount Slot 8: by M5 × 6 screw (DIN921), galvanised steel

**Material:** Black plastic (PA), fibreglass-reinforced

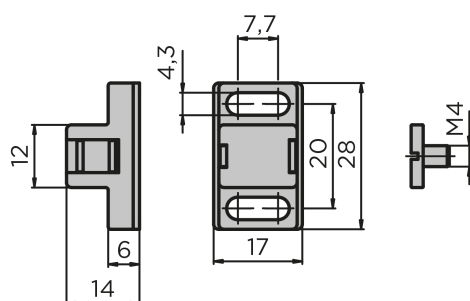
**System:** 40 - Slot 8; 30 - Slot 6; 20 - Slot 5

**Type:** Door Latches & Interlocks

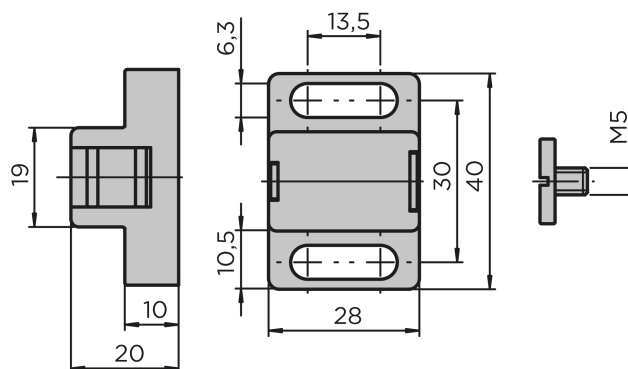


## General Data

Slot 5



Slot 8



Designation	Description	Locking force (N)
<b>PZ5057</b>	Magnetic catch	Approx. 5 (front) / 3 (back)
<b>PZ1610</b>	Magnetic catch	Approx. 20 (front) / 10 (back)