

## Special T-Nut

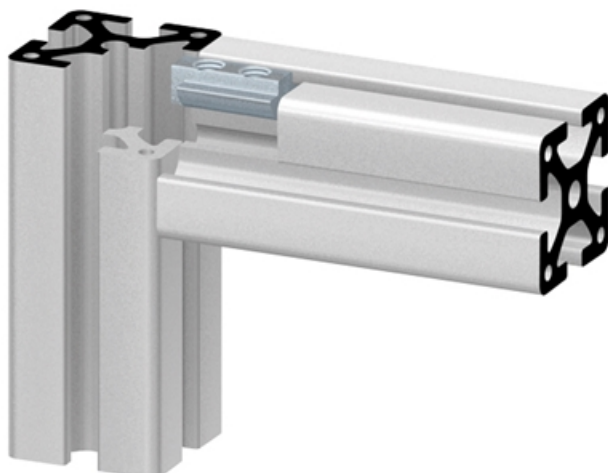
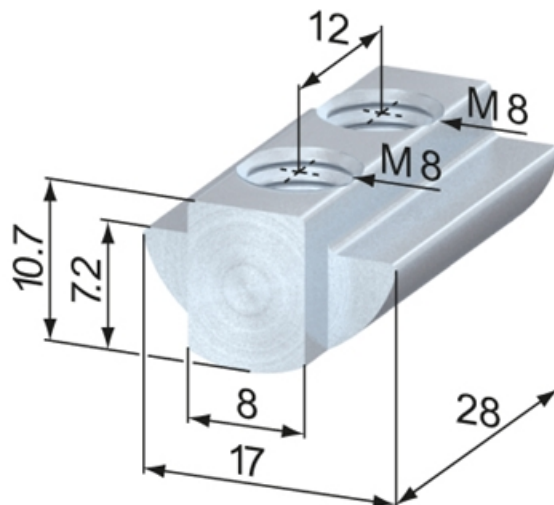
Application:

Provides anti-twist security used for heavy loads.

**Material:** Steel, zinc-plated

**System:** 40 - Slot 8

**Type:** T-nuts



T-Nuts, slide-in



T-Nuts, push-in



### T-Slot Strength

Information in regards to the maximum allowable t-slot load capability F. These values already include a safety factor ( $S > 2$ ) against plastic deformation.

Profile type	Max. pull charge F
standard	5000 N
double br.	3250 N
semi	2500 N
light	2000 N
superlight	1750 N



## General Data

Designation	System	Weight (g)
SV2060V	40 - Slot 8	21