

Central Fastener 40 SVL

Application:

All-purpose universal fastener. The slide-in anchor is held in position in the profile groove by a spring-loaded ball in the opposing profile t-slot. The SV fasteners have an anti-twist feature.

Assembly:

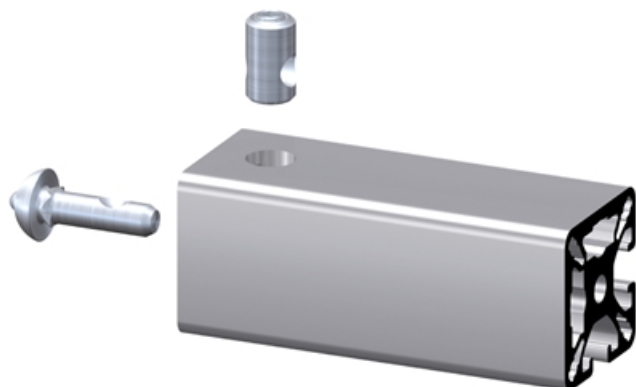
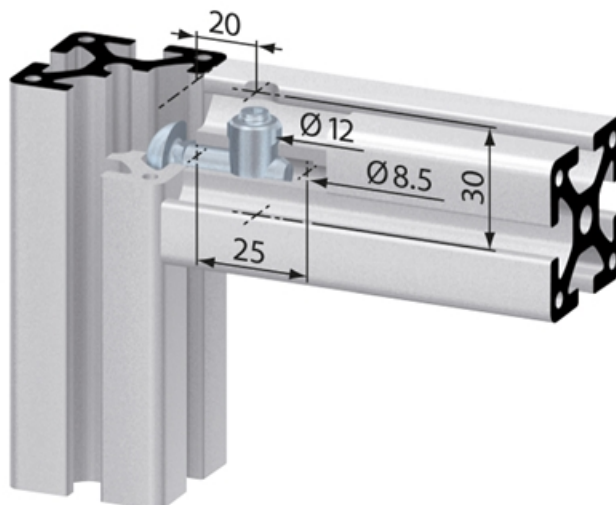
Bore hole for the barrel housing: $\varnothing 12$ mm, 20 mm from profile end, 30 mm deep.

Bore for center hole on end of profile for anchor: $\varnothing 8.5$ mm, 25 mm deep.

Material: Steel, zinc-plated

System: 40 - Slot 8

Type: Fasteners



General Data

| Designation | Description | System | Weight (g) |
|-------------|------------------------|-------------|------------|
| SV1222V | Central fastener SVL90 | 40 - Slot 8 | 31 |