

## Central Fastener 40 SL / SVL

### Application:

Special applications. The slide-in anchor, with an anti-twist feature, can be fixed in the profile t-slot at any point. The anchor is held in position by a spring-loaded ball in the opposing profile t-slot. The SVL fastener has an anti-twist feature. Both fasteners can be used for parallel and transverse connections.

### Assembly:

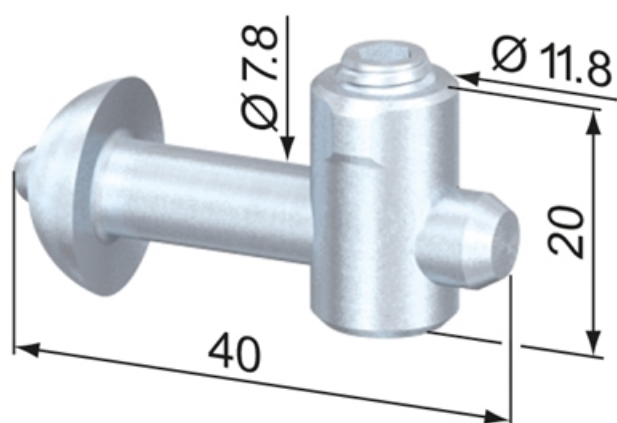
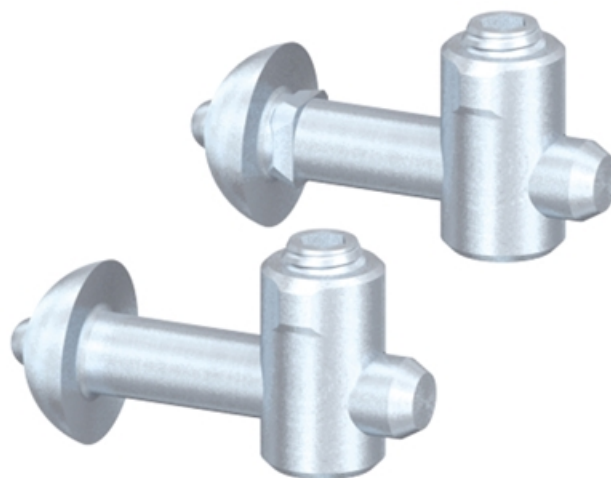
Bore hole for the barrel housing:  $\varnothing 12$  mm, 20 mm from profile end, 30 mm deep.

Bore for anchor in the profile:  $\varnothing 8.5$  mm, 20 mm from profile end, 25 mm deep.

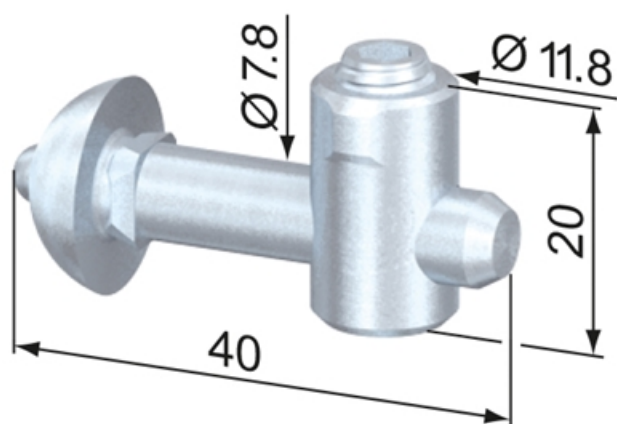
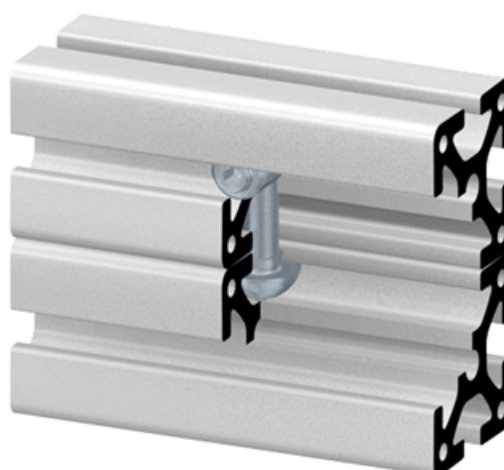
**Material:** Steel, zinc-plated

**System:** 40 - Slot 8

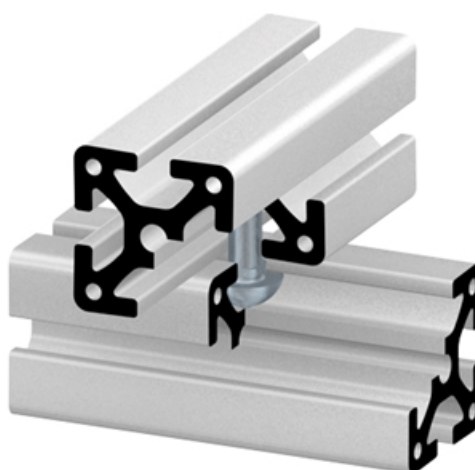
**Type:** Fasteners



SV1213V



SV1221V



## General Data

Designation	Description	System	Weight (g)
SV1221V	Central Fastener 40 SVL	40 - Slot 8	31