

Swivel Castors, Plate Fitting

Housing made of Polyamide, precision ball bearing in swivel head, plate fitting.

Wheel centre made of Polyamide.

Tread made of Polyurethane, precision ball bearing.

Standard: EN 12530

Hardness of tread: Shore A 92

Material: Polyamide

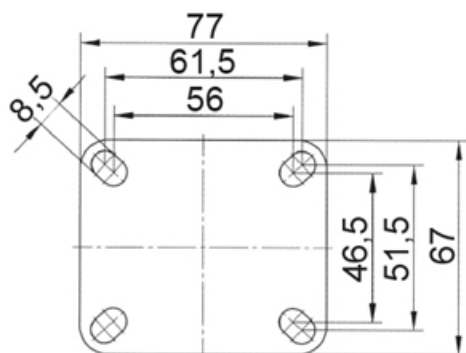
System: 40 - Slot 8; 30 - Slot 6; 20 - Slot 5

Temperature range (°C): -10° to +40°

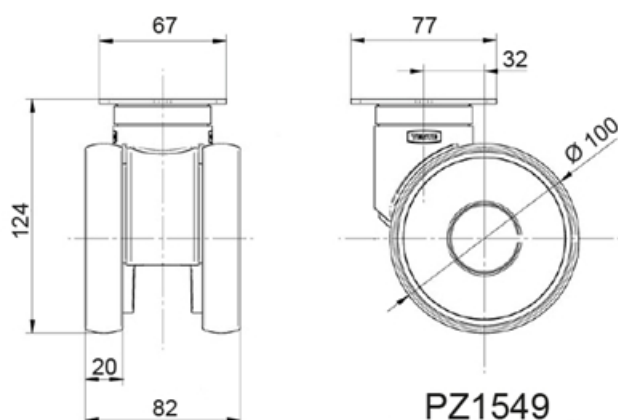
Type: Castors



Plate Fitting



PZ1549

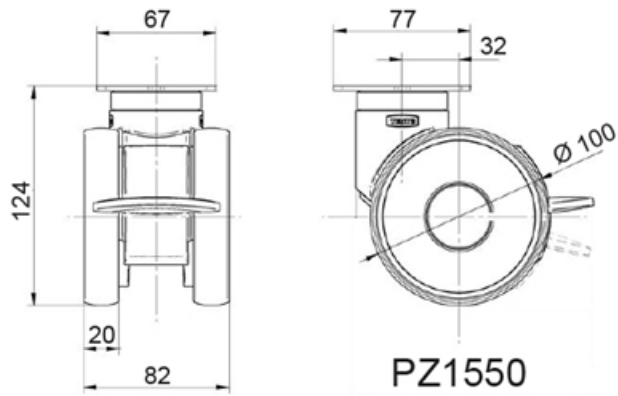


PZ1549

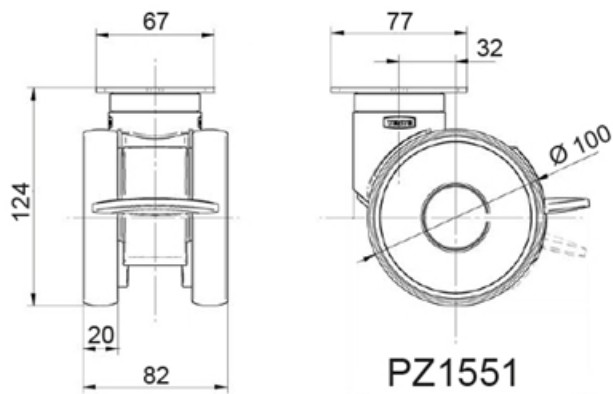


PZ1550

Swivel Castors, Plate Fitting



PZ1551



General Data

Designation	Description	Colour	Weight (g)	Swivel Interference (mm)	Load Capacity (kg)
PZ1549	Swivel castor with plate fitting	RAL9002	804	180	100
PZ1550	Swivel castor with directional lock, plate fitting	RAL9002	865	216	100
PZ1551	Swivel castor with total lock, plate fitting	RAL9002	871	216	100

Designation	Static Load Capacity (kg)
PZ1549	200
PZ1550	200
PZ1551	200