

Adjusting Elements

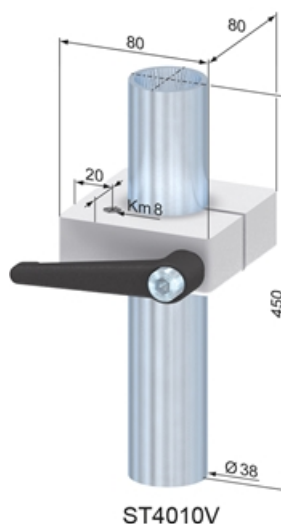
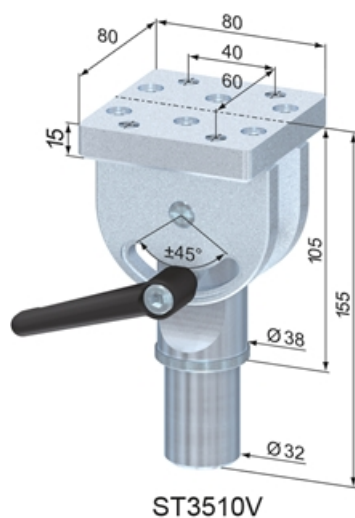
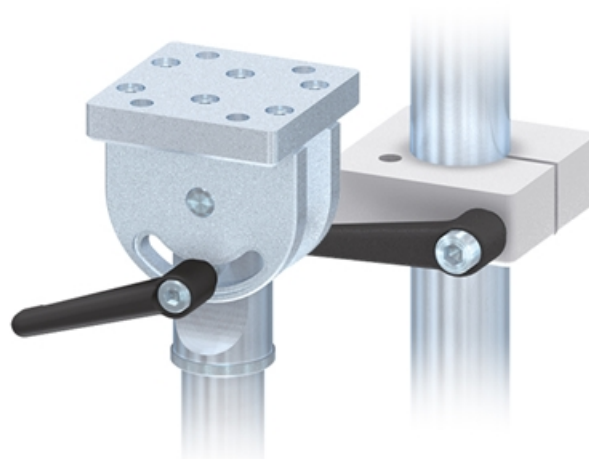
Application:

Suitable for variable angle adjustments as well as for vertical adjustments.

Material: Steel, zinc-plated

System: 40 - Slot 8

Type: Bearing Plates & Adjusting Elements



General Data

Designation	Description	System	Weight (kg)
ST3510V	Angle Adjuster	40 - Slot 8	2.2
ST4010V	Vertical Adjuster	40 - Slot 8	1.75