

System Glider

Application:

Linear guidance of one profile against another. Used for sliding doors or windows. The system glider is locked into the profile t-slot via M 4 grub screws. The distance between the profiles amounts to 2.1 mm.

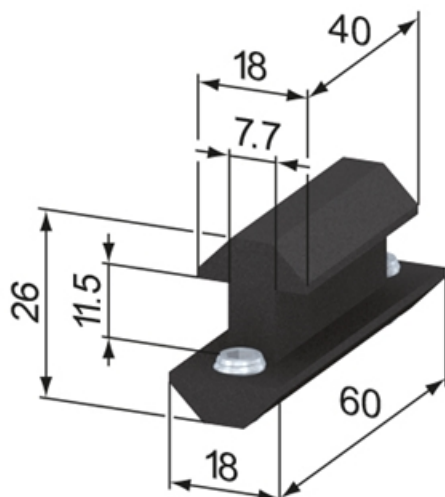
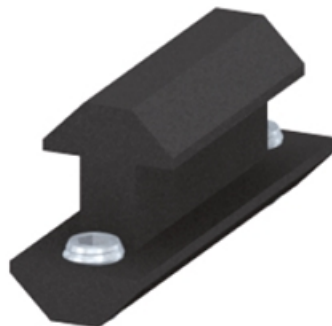
Supply:

2x grub screw M 8 x 8, zinc-plated

Material: POM, black

System: 40 - Slot 8

Type: System Gliders and Rollers



General Data

Designation	Description	System	Weight (g)
SZ1300S	System Glider 40 / 60	40 - Slot 8	22