

Roller Housings

Application:

For attaching load bearing rollers to the profile.

Roller housing 40 consists of:

- 1x spacer; steel, zinc-plated
- 1x load bearing roller axle
- 2x countersink screw M6 x 12, zinc-plated
- 1x button head screw M8 x 16
- 2x anti-twist set screw
- 1x roller housing 40

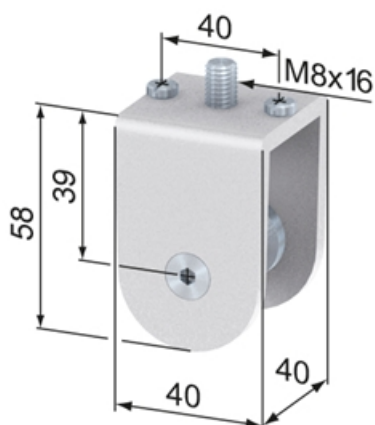
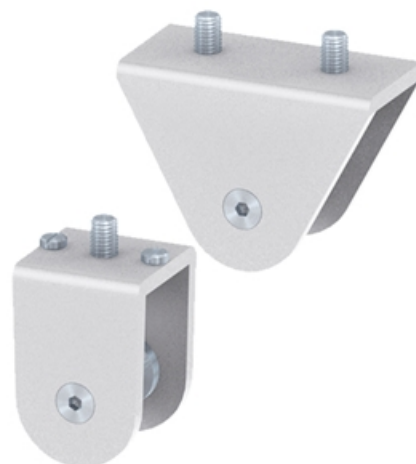
Roller housing 80 consists of:

- 1x spacer; steel, zinc-plated
- 1x load bearing roller axle
- 2x countersink screw M6 x 12, zinc-plated
- 2x button head screw M8 x 16
- 1x roller housing 80

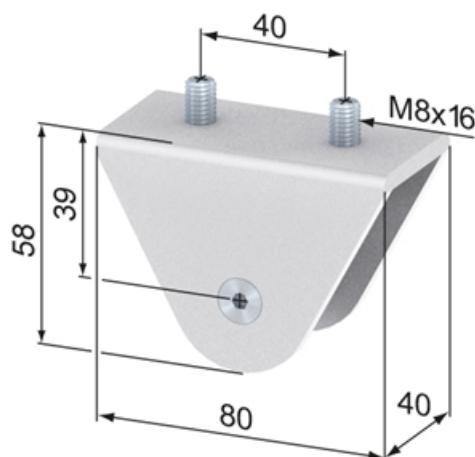
Material: Aluminium, natural anodized

System: 40 - Slot 8

Type: System Gliders and Rollers



SZ2620N



SZ2640N

Roller Housings



General Data

Designation	Description	System	Weight (g)
SZ2620N	Roller Housing 40	40 - Slot 8	70
SZ2640N	Roller Housing 80	40 - Slot 8	160